

ATE1 Rabbit mAb

Catalog No: #52161

Package Size: #52161-1 50ul #52161-2 100ul

Orders: order@signalwayantibody.com

Support: tech@signalwayantibody.com

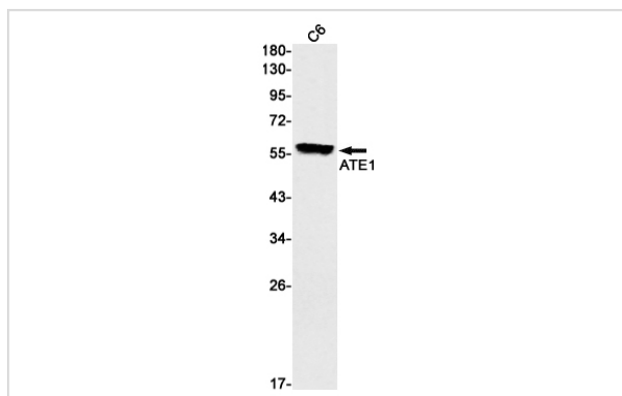
Description

Product Name	ATE1 Rabbit mAb
Host Species	Recombinant Rabbit
Clonality	Monoclonal antibody
Clone No.	S09-6D4
Isotype	Rabbit IgG
Purification	Affinity Purified
Applications	WB IHC
Species Reactivity	Human,Mouse,Rat
Immunogen Description	A synthetic peptide of human ATE1
Conjugates	Unconjugated
Modification	Unmodification
Other Names	Arginyltransferase 1;R-transferase 1
Accession No.	Swiss-Prot:O95260GeneID:11101
Uniprot	O95260
GeneID	11101
Calculated MW	Calculated MW: 59 kDa; Observed MW: 59 kDa
Concentration	0.3 mg/ml
Formulation	50mM Tris-Glycine(pH 7.4), 0.15M NaCl, 40% Glycerol, 0.01% Sodium azide and 0.05% BSA
Storage	Store at 4°C short term. Aliquot and store at -20°C long term. Avoid freeze/thaw cycles.

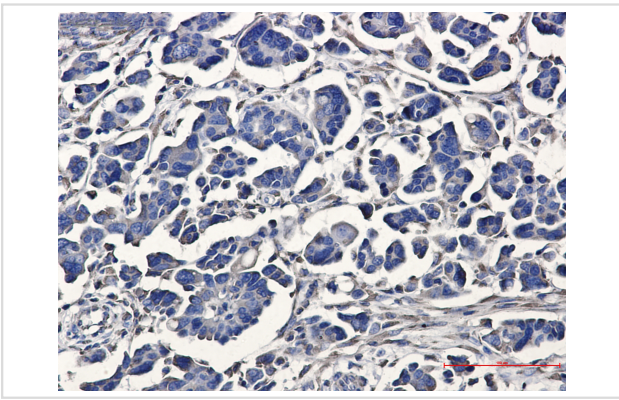
Application Details

WB: 1/1000; IHC: 1/20;

Images



Western blot detection of ATE1 in C6 cell lysates using ATE1 Rabbit mAb(1:1000 diluted).Predicted band size:59kDa.Observed band size:59kDa.



Immunohistochemistry of ATE1 in paraffin-embedded Human Cholangiocarcinoma using ATE1 Rabbit mAb at dilution 1/20

Background

Swiss-Prot Acc.O95260.Involved in the post-translational conjugation of arginine to the N-terminal aspartate or glutamate of a protein. This arginylation is required for degradation of the protein via the ubiquitin pathway. Does not arginylate cysteine residues .

Note: This product is for in vitro research use only