

ATG16L1 Rabbit mAb

Catalog No: #52162

Package Size: #52162-1 50ul #52162-2 100ul

Orders: order@signalwayantibody.com

Support: tech@signalwayantibody.com

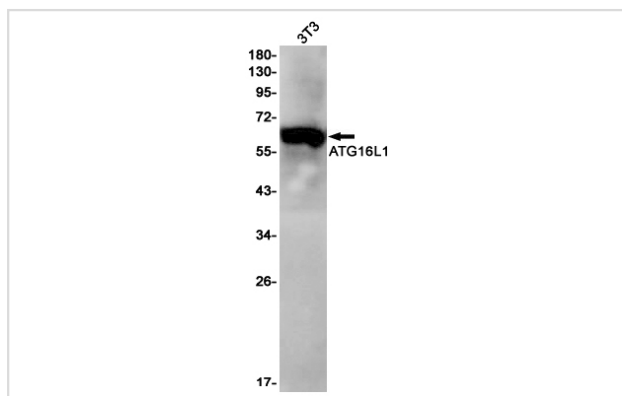
Description

Product Name	ATG16L1 Rabbit mAb
Host Species	Recombinant Rabbit
Clonality	Monoclonal antibody
Clone No.	S03-4G8
Isotype	Rabbit IgG
Purification	Affinity Purified
Applications	WB
Species Reactivity	Human,Mouse,Rat
Immunogen Description	Recombinant protein of human ATG16L1
Conjugates	Unconjugated
Modification	Unmodification
Other Names	IBD10; WDR30; APG16L; ATG16A; ATG16L
Accession No.	Swiss-Prot:Q676U5GeneID:55054
Uniprot	Q676U5
GeneID	55054
Calculated MW	Calculated MW: 68 kDa; Observed MW: 68 kDa
Concentration	0.3 mg/ml
Formulation	50mM Tris-Glycine(pH 7.4), 0.15M NaCl, 40% Glycerol, 0.01% Sodium azide and 0.05% BSA
Storage	Store at 4°C short term. Aliquot and store at -20°C long term. Avoid freeze/thaw cycles.

Application Details

WB: 1/1000-1/2000

Images



Western blot detection of ATG16L1 in 3T3 cell lysates using ATG16L1 Rabbit mAb(1:1000 diluted). Predicted band size:68kDa.Observed band size:68kDa.

Background

Swiss-Prot Acc.Q676U5.Plays an essential role in autophagy: interacts with ATG12-ATG5 to mediate the conjugation of phosphatidylethanolamine (PE) to LC3 (MAP1LC3A, MAP1LC3B or MAP1LC3C), to produce a membrane-bound activated form of LC3 named LC3-II. Thereby, controls the elongation of the nascent autophagosomal membrane (PubMed:24553140, PubMed:23376921, PubMed:24954904, PubMed:27273576, PubMed:23392225). Regulates mitochondrial antiviral signaling (MAVS)-dependent type I interferon (IFN-I) production (PubMed:25645662). Negatively regulates NOD1- and NOD2-driven inflammatory cytokine response (PubMed:24238340). Instead, promotes with NOD2 an autophagy-dependent antibacterial pathway (PubMed:20637199). Plays a role in regulating morphology and function of Paneth cell (PubMed:18849966).

Note: This product is for in vitro research use only