

ATG4C Rabbit mAb

Catalog No: #52163

Package Size: #52163-1 50ul #52163-2 100ul

Orders: order@signalwayantibody.com

Support: tech@signalwayantibody.com

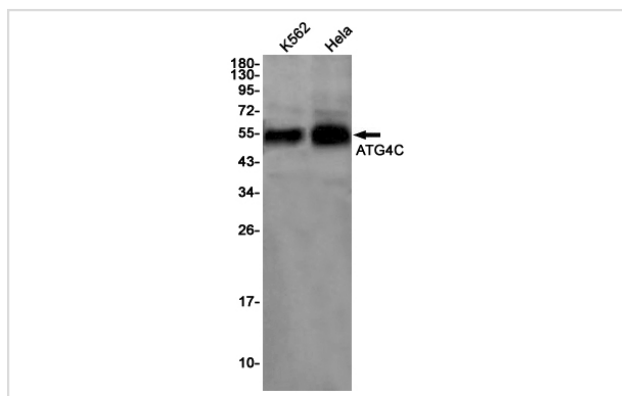
Description

Product Name	ATG4C Rabbit mAb
Host Species	Recombinant Rabbit
Clonality	Monoclonal antibody
Clone No.	S08-8G9
Isotype	Rabbit IgG
Purification	Affinity Purified
Applications	WB IHC
Species Reactivity	Human
Immunogen Description	Recombinant protein of human ATG4C
Conjugates	Unconjugated
Modification	Unmodification
Other Names	APG4C; AUTL1; AUTL3; APG4-C
Accession No.	Swiss-Prot:Q96DT6GeneID:84938
Uniprot	Q96DT6
GeneID	84938
Calculated MW	Calculated MW: 53 kDa; Observed MW: 53 kDa
Concentration	0.3 mg/ml
Formulation	50mM Tris-Glycine(pH 7.4), 0.15M NaCl, 40% Glycerol, 0.01% Sodium azide and 0.05% BSA
Storage	Store at 4°C short term. Aliquot and store at -20°C long term. Avoid freeze/thaw cycles.

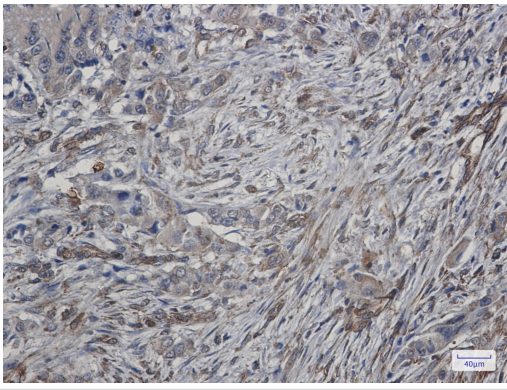
Application Details

WB: 1/1000; IHC: 1/50;

Images



Western blot detection of ATG4C in K562, HeLa cell lysates using ATG4C Rabbit mAb (1:1000 diluted). Predicted band size: 53 kDa. Observed band size: 53 kDa.



Immunohistochemistry of ATG4C in paraffin-embedded Human lung cancer tissue using ATG4C Rabbit mAb at dilution 1/50

Background

Swiss-Prot Acc.Q96DT6.Cysteine protease required for the cytoplasm to vacuole transport (Cvt) and autophagy. Is not essential for autophagy development under normal conditions but is required for a proper autophagic response under stressful conditions such as prolonged starvation . Cleaves the C-terminal amino acid of ATG8 family proteins MAP1LC3 and GABARAPL2, to reveal a C-terminal glycine. Exposure of the glycine at the C-terminus is essential for ATG8 proteins conjugation to phosphatidylethanolamine (PE) and insertion to membranes, which is necessary for autophagy. Has also an activity of delipidating enzyme for the PE-conjugated forms.

Note: This product is for in vitro research use only