

ATP1B1 Rabbit mAb

Catalog No: #52164

Package Size: #52164-1 50ul #52164-2 100ul

Orders: order@signalwayantibody.com

Support: tech@signalwayantibody.com

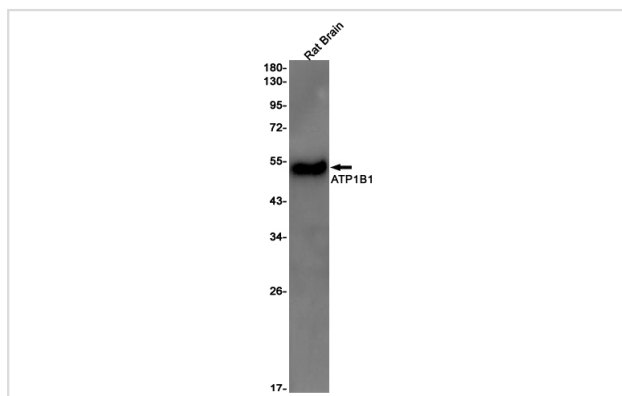
Description

Product Name	ATP1B1 Rabbit mAb
Host Species	Recombinant Rabbit
Clonality	Monoclonal antibody
Clone No.	S02-8B6
Isotype	Rabbit IgG
Purification	Affinity Purified
Applications	WB IHC
Species Reactivity	Human,Mouse,Rat
Immunogen Description	A synthetic peptide of human ATP1B1
Conjugates	Unconjugated
Modification	Unmodification
Other Names	Adenosinetriphosphatase; ATP1B; ATP1B1; Atpb 1; ATPBS;
Accession No.	Swiss-Prot:P05026GenelD:481
Uniprot	P05026
GenelD	481
Calculated MW	Calculated MW: 35 kDa; Observed MW: 45-55 kDa
Concentration	0.3 mg/ml
Formulation	50mM Tris-Glycine(pH 7.4), 0.15M NaCl, 40% Glycerol, 0.01% Sodium azide and 0.05% BSA
Storage	Store at 4°C short term. Aliquot and store at -20°C long term. Avoid freeze/thaw cycles.

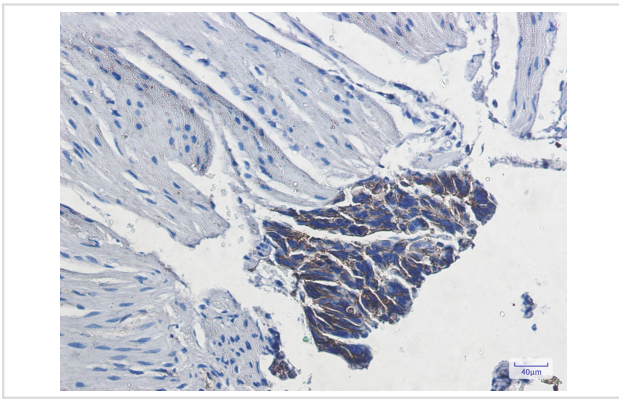
Application Details

WB: 1/1000-1/5000; IHC: 1/20-1/50

Images



Western blot detection of ATP1B1 in Rat Brain lysates using ATP1B1 Rabbit mAb(1:1000 diluted).Predicted band size:35kDa.Observed band size:45-55kDa.



Immunohistochemistry of ATP1B1 in paraffin-embedded Human colon cancer tissue using ATP1B1 Rabbit mAb at dilution 1/20

Background

Swiss-Prot Acc.P05026. This is the non-catalytic component of the active enzyme, which catalyzes the hydrolysis of ATP coupled with the exchange of Na^+ and K^+ ions across the plasma membrane. The beta subunit regulates, through assembly of alpha/beta heterodimers, the number of sodium pumps transported to the plasma membrane.

Note: This product is for in vitro research use only