

ATP1B3 Rabbit mAb

Catalog No: #52165

Package Size: #52165-1 50ul #52165-2 100ul

Orders: order@signalwayantibody.com

Support: tech@signalwayantibody.com

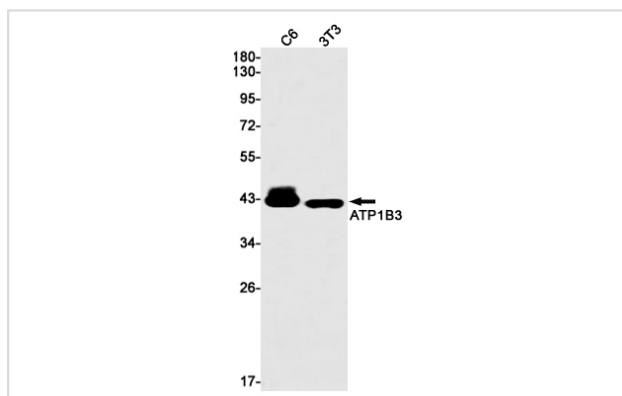
Description

Product Name	ATP1B3 Rabbit mAb
Host Species	Recombinant Rabbit
Clonality	Monoclonal antibody
Clone No.	S02-1B4
Isotype	Rabbit IgG
Purification	Affinity Purified
Applications	WB
Species Reactivity	Human,Mouse,Rat
Immunogen Description	A synthetic peptide of human ATP1B3
Conjugates	Unconjugated
Modification	Unmodification
Other Names	atp1b3; ATPB3; CD298; FLJ29027; NKAB3S; Sodium pump subunit beta 3; Sodium/potassium dependent ATPase subunit beta 3;
Accession No.	Swiss-Prot:P54709GenID:483
Uniprot	P54709
GeneID	483
Calculated MW	Calculated MW: 32 kDa; Observed MW: 40 kDa
Concentration	0.3 mg/ml
Formulation	50mM Tris-Glycine(pH 7.4), 0.15M NaCl, 40% Glycerol, 0.01% Sodium azide and 0.05% BSA
Storage	Store at 4°C short term. Aliquot and store at -20°C long term. Avoid freeze/thaw cycles.

Application Details

WB: 1/1000

Images



Western blot detection of ATP1B3 in C6,3T3 cell lysates using ATP1B3 Rabbit mAb(1:1000 diluted).Predicted band size:32kDa.Observed band size:40kDa.

Background

Swiss-Prot Acc.P54709.This is the non-catalytic component of the active enzyme, which catalyzes the hydrolysis of ATP coupled with the exchange of Na⁺ and K⁺ ions across the plasma membrane. The exact function of the beta-3 subunit is not known.

Note: This product is for in vitro research use only