

AZI2 Rabbit mAb

Catalog No: #52169

Package Size: #52169-1 50ul #52169-2 100ul

Orders: order@signalwayantibody.com

Support: tech@signalwayantibody.com

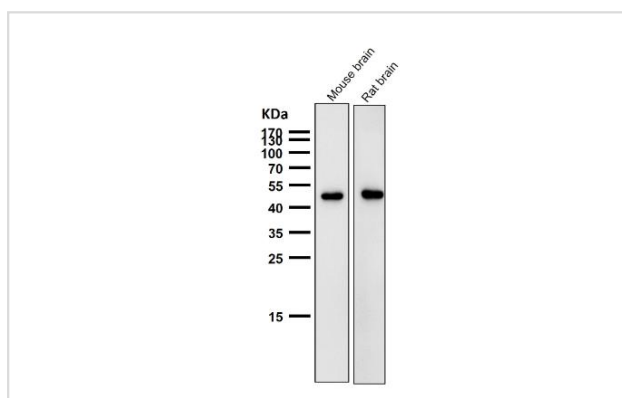
Description

Product Name	AZI2 Rabbit mAb
Clone No.	S01-7E7
Isotype	Rabbit IgG
Purification	Affinity Purified
Applications	WB,ICC/IF
Species Reactivity	Human,Mouse,Rat
Immunogen Description	Recombinant protein of human AZI2
Conjugates	Unconjugated
Modification	Unmodification
Other Names	AZ2; NAP1; TILP
Accession No.	Swiss-Prot:Q9H6S1GeneID:64343
Uniprot	Q9H6S1
GeneID	64343
Calculated MW	Calculated MW: 45 kDa; Observed MW: 45 kDa
Concentration	0.3 mg/ml
Formulation	Rabbit IgG in phosphate buffered saline , pH 7.4, 150mM NaCl, 0.02% sodium azide and 50% glycerol.
Storage	Store at 4°C short term. Aliquot and store at -20°C long term. Avoid freeze/thaw cycles.

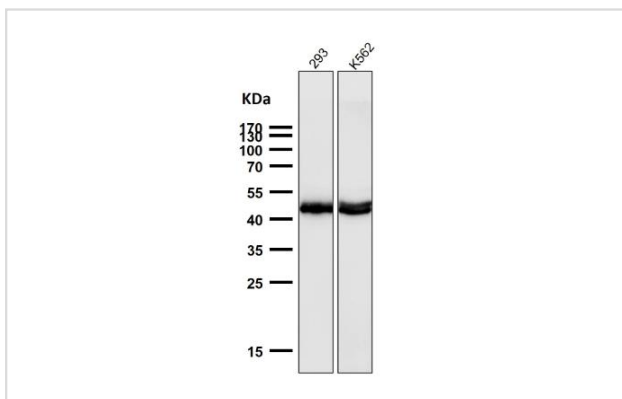
Application Details

WB 1:500-1:2000 ICC/IF 1:50-1:200

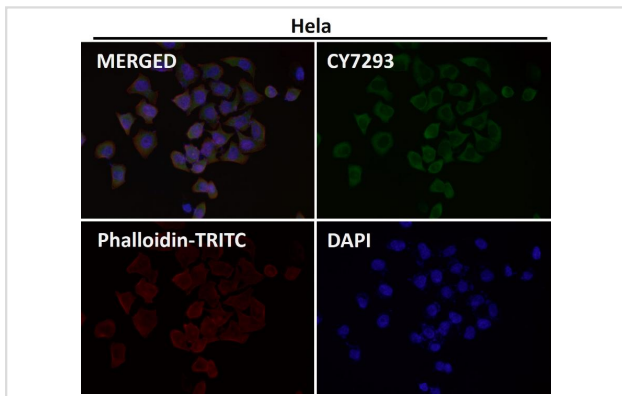
Images



All lanes use the Antibody at 1:1K dilution for 1 hour at room temperature.



All lanes use the Antibody at 1:1K dilution for 1 hour at room temperature.



Immunofluorescent analysis using the Antibody at 1:50 dilution.

Background

Swiss-Prot Acc.Q9H6S1. Adapter protein which binds TBK1 and IKKε playing a role in antiviral innate immunity. Activates serine/threonine-protein kinase TBK1 and facilitates its oligomerization. Enhances the phosphorylation of NF-κB p65 subunit RELA by TBK1. Promotes TBK1-induced as well as TNF-α or PMA-induced activation of NF-κB. Participates in IFNβ promoter activation via TICAM1.

Note: This product is for in vitro research use only