

Bcl10 Rabbit mAb

Catalog No: #52175

Package Size: #52175-1 50ul #52175-2 100ul

Orders: order@signalwayantibody.com

Support: tech@signalwayantibody.com

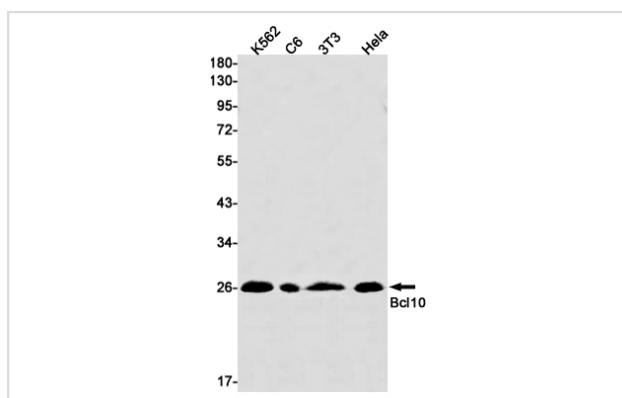
Description

Product Name	Bcl10 Rabbit mAb
Host Species	Recombinant Rabbit
Clonality	Monoclonal antibody
Clone No.	S09-3C6
Isotype	Rabbit IgG
Purification	Affinity Purified
Applications	WB
Species Reactivity	Human
Immunogen Description	A synthetic peptide of human Bcl10
Conjugates	Unconjugated
Modification	Unmodification
Other Names	CLAP; mE10; CIPER; IMD37; c-E10; CARMEN
Accession No.	Swiss-Prot:O95999GeneID:8915
Uniprot	O95999
GeneID	8915
Calculated MW	Calculated MW: 26 kDa; Observed MW: 26 kDa
Concentration	0.3 mg/ml
Formulation	50mM Tris-Glycine(pH 7.4), 0.15M NaCl, 40% Glycerol, 0.01% Sodium azide and 0.05% BSA
Storage	Store at 4°C short term. Aliquot and store at -20°C long term. Avoid freeze/thaw cycles.

Application Details

WB: 1/1000-1/5000;

Images



Western blot detection of Bcl10 in K562,C6,3T3,HeLa cell lysates using Bcl10 Rabbit mAb(1:1000 diluted).Predicted band size:26kDa.Observed band size:26kDa.

Background

Swiss-Prot Acc.O95999.Involved in adaptive immune response (PubMed:25365219). Promotes apoptosis, pro-caspase-9 maturation and activation of NF-kappa-B via NIK and IKK. May be an adapter protein between upstream TNFR1-TRADD-RIP complex and the downstream NIK-IKK-IKAP complex. Is a substrate for MALT1 (PubMed:18264101).

Note: This product is for in vitro research use only