

beta III Tubulin Rabbit mAb

Catalog No: #52177

Package Size: #52177-1 50ul #52177-2 100ul

Orders: order@signalwayantibody.com

Support: tech@signalwayantibody.com

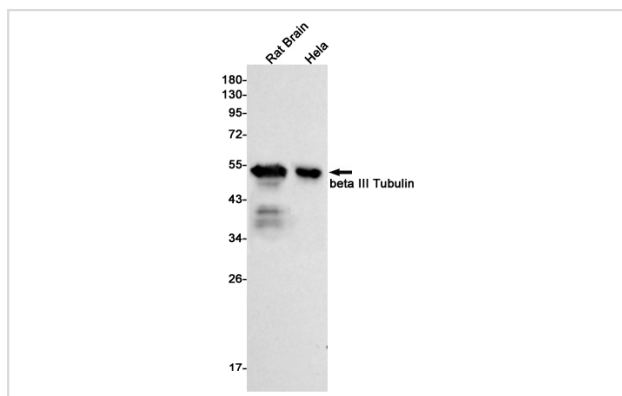
Description

| | |
|-----------------------|--|
| Product Name | beta III Tubulin Rabbit mAb |
| Host Species | Recombinant Rabbit |
| Clonality | Monoclonal antibody |
| Clone No. | S02-4G7 |
| Isotype | Rabbit IgG |
| Purification | Affinity Purified |
| Applications | WB IHC IF |
| Species Reactivity | Human,Mouse,Rat |
| Immunogen Description | A synthetic peptide of human beta III Tubulin |
| Conjugates | Unconjugated |
| Modification | Unmodification |
| Other Names | CDCBM; FEOM3; TUBB4; CDCBM1; CFEOM3; beta-4; CFEOM3A |
| Accession No. | Swiss-Prot:Q13509GeneID:10381 |
| Uniprot | Q13509 |
| GeneID | 10381 |
| Calculated MW | Calculated MW: 50 kDa; Observed MW: 50 kDa |
| Concentration | 0.3 mg/ml |
| Formulation | 50mM Tris-Glycine(pH 7.4), 0.15M NaCl, 40% Glycerol, 0.01% Sodium azide and 0.05% BSA |
| Storage | Store at 4°C short term. Aliquot and store at -20°C long term. Avoid freeze/thaw cycles. |

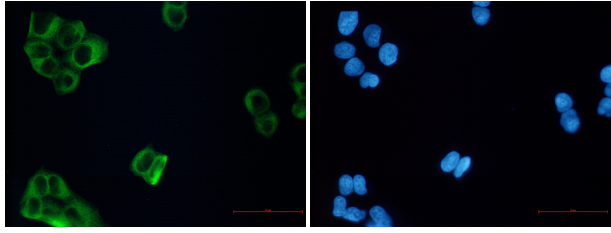
Application Details

WB: 1/5000; IHC: 1/50; ICC/IF: 1/20;

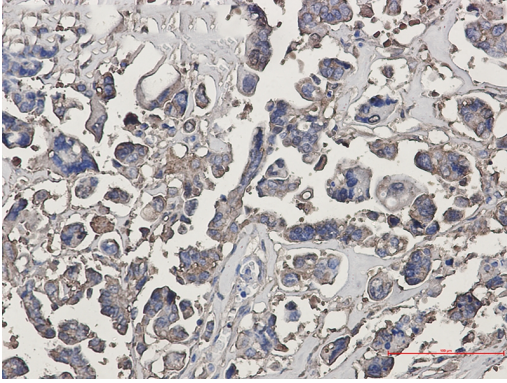
Images



Western blot detection of beta III Tubulin in Rat Brain, HeLa cell lysates using beta III Tubulin Rabbit mAb (1:1000 diluted). Predicted band size: 50 kDa. Observed band size: 50 kDa.



Immunofluorescence of beta III Tubulin (green) in HeLa using beta III Tubulin Rabbit mAb at dilution 1/5, and DAPI(blue)



Immunohistochemistry of beta III Tubulin in paraffin-embedded Human Cholangiocarcinoma using beta III Tubulin Rabbit mAb at dilution 1/50

Background

Swiss-Prot Acc.Q13509.Tubulin is the major constituent of microtubules. It binds two moles of GTP, one at an exchangeable site on the beta chain and one at a non-exchangeable site on the alpha chain. TUBB3 plays a critical role in proper axon guidance and maintenance.

Note: This product is for in vitro research use only