

C3 Rabbit mAb

Catalog No: #52182

Package Size: #52182-1 50ul #52182-2 100ul

Orders: order@signalwayantibody.com

Support: tech@signalwayantibody.com

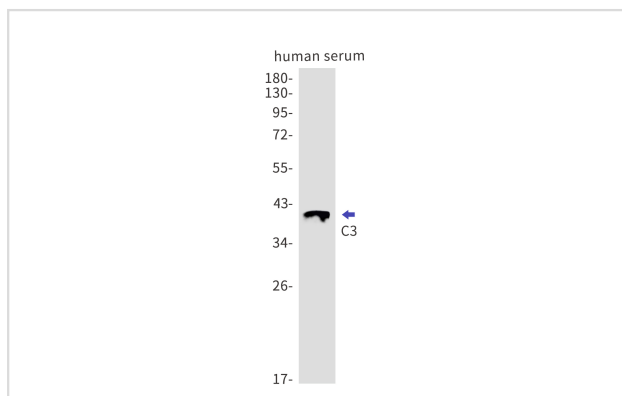
Description

Product Name	C3 Rabbit mAb
Host Species	Recombinant Rabbit
Clonality	Monoclonal antibody
Clone No.	S06-2C2
Isotype	Rabbit IgG
Purification	Affinity Purified
Applications	WB
Species Reactivity	Human,Mouse,Rat
Immunogen Description	A synthetic peptide of human C3
Conjugates	Unconjugated
Modification	Unmodification
Other Names	AHUS5; ARMD9; ASP; Complement C3; Complement factor 3; CPAMD1; HEL S 62p;
Accession No.	Swiss-Prot:P01024GenelD:718
Uniprot	P01024
GenelD	718
Calculated MW	Calculated MW: 187 kDa; Observed MW: 187 kDa
Concentration	0.3 mg/ml
Formulation	50mM Tris-Glycine(pH 7.4), 0.15M NaCl, 40% Glycerol, 0.01% Sodium azide and 0.05% BSA
Storage	Store at 4°C short term. Aliquot and store at -20°C long term. Avoid freeze/thaw cycles.

Application Details

WB: 1/1000;

Images



Western blot detection of C3 in human serum lysates using C3 antibody. Predicted band size: 187kDa. Observed band size: 187, 115, 40, 34kDa.

Background

Swiss-Prot Acc.P01024. C3 plays a central role in the activation of the complement system. Its processing by C3 convertase is the central reaction in both classical and alternative complement pathways. After activation C3b can bind covalently, via its reactive thioester, to cell surface carbohydrates or immune aggregates. Derived from proteolytic degradation of complement C3, C3a anaphylatoxin is a mediator of local inflammatory process. In chronic inflammation, acts as a chemoattractant for neutrophils . It induces the contraction of smooth muscle, increases vascular permeability and causes histamine release from mast cells and basophilic leukocytes.

Note: This product is for in vitro research use only