

C3orf38 Rabbit mAb

Catalog No: #52183

Package Size: #52183-1 50ul #52183-2 100ul

Orders: order@signalwayantibody.com

Support: tech@signalwayantibody.com

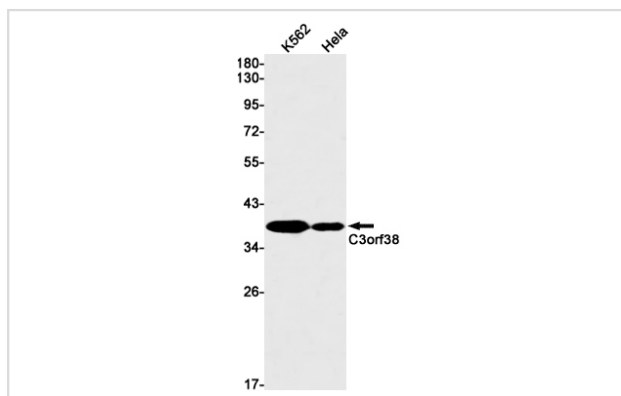
Description

Product Name	C3orf38 Rabbit mAb
Host Species	Recombinant Rabbit
Clonality	Monoclonal antibody
Clone No.	S08-3H6
Isotype	Rabbit IgG
Purification	Affinity Purified
Applications	WB
Species Reactivity	Human
Immunogen Description	Recombinant protein of human C3orf38
Conjugates	Unconjugated
Modification	Unmodification
Other Names	Uncharacterized protein C3orf38
Accession No.	Swiss-Prot:Q5JPI3GenelD:285237
Uniprot	Q5JPI3
GenelD	285237
Calculated MW	Calculated MW: 38 kDa; Observed MW: 38 kDa
Concentration	0.3 mg/ml
Formulation	50mM Tris-Glycine(pH 7.4), 0.15M NaCl, 40% Glycerol, 0.01% Sodium azide and 0.05% BSA
Storage	Store at 4°C short term. Aliquot and store at -20°C long term. Avoid freeze/thaw cycles.

Application Details

WB: 1/1000-1/5000

Images



Western blot detection of C3orf38 in K562, HeLa cell lysates using C3orf38 Rabbit mAb(1:1000 diluted). Predicted band size: 38kDa. Observed band size: 38kDa.

Background

Swiss-Prot Acc.Q5JPI3.May be involved in apoptosis regulation.

Note: This product is for in vitro research use only