

Calretinin Rabbit mAb

Catalog No: #52185

Package Size: #52185-1 50ul #52185-2 100ul

Orders: order@signalwayantibody.com

Support: tech@signalwayantibody.com

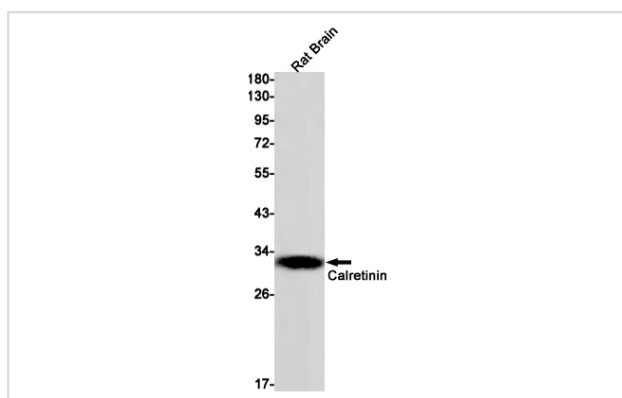
Description

Product Name	Calretinin Rabbit mAb
Host Species	Recombinant Rabbit
Clonality	Monoclonal antibody
Clone No.	S01-2G7
Isotype	Rabbit IgG
Purification	Affinity Purified
Applications	WB IF
Species Reactivity	Human,Mouse,Rat
Immunogen Description	A synthetic peptide of human Calretinin
Conjugates	Unconjugated
Modification	Unmodification
Other Names	CR; CAL2; CAB29
Accession No.	Swiss-Prot:P22676GenelD:794
Uniprot	P22676
GenelD	794
Calculated MW	Calculated MW: 32 kDa; Observed MW: 32 kDa
Concentration	0.3 mg/ml
Formulation	50mM Tris-Glycine(pH 7.4), 0.15M NaCl, 40% Glycerol, 0.01% Sodium azide and 0.05% BSA
Storage	Store at 4°C short term. Aliquot and store at -20°C long term. Avoid freeze/thaw cycles.

Application Details

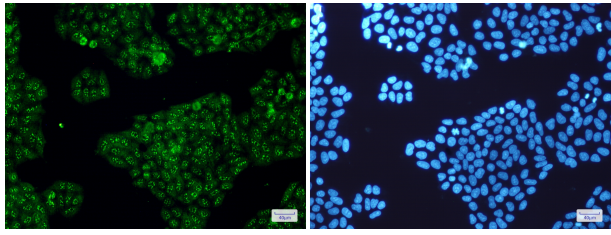
WB: 1/1000; ICC/IF: 1/20-1/50;

Images



Western blot detection of Calretinin in Rat Brain lysates using Calretinin Rabbit mAb(1:1000 diluted).Predicted band size:32kDa.Observed band size:32kDa.

Immunofluorescence of Calretinin(green) in Hela cells using Calretinin Rabbit mAb at dilution 1/50, and DAPI(blue)



Background

Swiss-Prot Acc.P22676.Calretinin is a calcium-binding protein which is abundant in auditory neurons.RegionsFeature keyPosition(s)Description

Note: This product is for in vitro research use only