

CARD9 Rabbit mAb

Catalog No: #52190

Package Size: #52190-1 50ul #52190-2 100ul

Orders: order@signalwayantibody.com

Support: tech@signalwayantibody.com

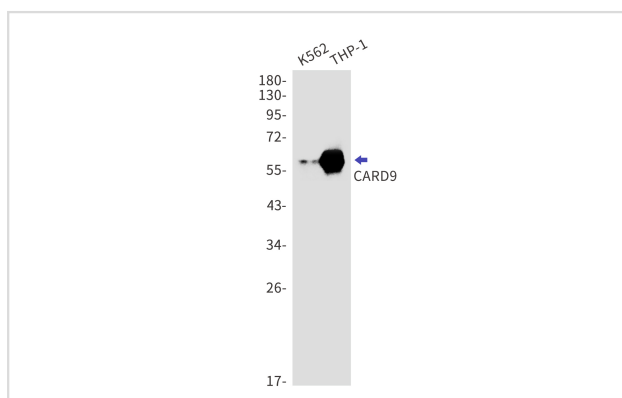
Description

Product Name	CARD9 Rabbit mAb
Host Species	Recombinant Rabbit
Clonality	Monoclonal antibody
Clone No.	S02-7H5
Isotype	Rabbit IgG
Purification	Affinity Purified
Applications	WB
Species Reactivity	Human
Immunogen Description	A synthetic peptide of human CARD9
Conjugates	Unconjugated
Modification	Unmodification
Other Names	Caspase recruitment domain-containing protein 9;hCARD9
Accession No.	Swiss-Prot:Q9H257GeneID:64170
Uniprot	Q9H257
GeneID	64170
Calculated MW	Calculated MW: 62 kDa; Observed MW: 62 kDa
Concentration	0.3 mg/ml
Formulation	50mM Tris-Glycine(pH 7.4), 0.15M NaCl, 40% Glycerol, 0.01% Sodium azide and 0.05% BSA
Storage	Store at 4°C short term. Aliquot and store at -20°C long term. Avoid freeze/thaw cycles.

Application Details

WB: 1/1000;

Images



Western blot detection of CARD9 in K562 and THP-1 cell lysates using CARD9 Rabbit mAb(1:1000 diluted). Predicted band size:62kDa.Observed band size:62kDa.

Background

Swiss-Prot Acc.Q9H257.Caspase recruitment domain-containing protein 9

Note: This product is for in vitro research use only