

## Catalase Rabbit mAb

Catalog No: #52192

Package Size: #52192-1 50ul #52192-2 100ul

Orders: order@signalwayantibody.com

Support: tech@signalwayantibody.com

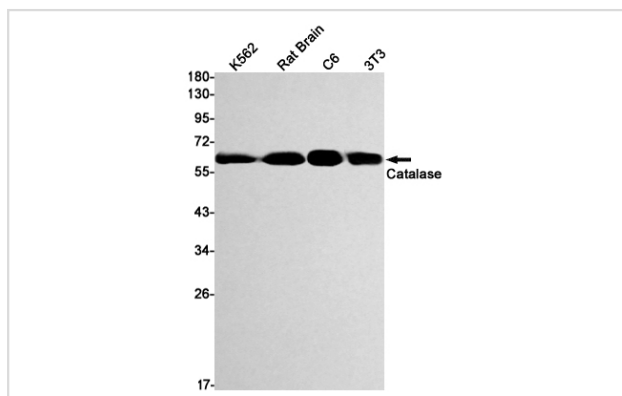
## Description

Product Name	Catalase Rabbit mAb
Host Species	Recombinant Rabbit
Clonality	Monoclonal antibody
Clone No.	S03-8E9
Isotype	Rabbit IgG
Purification	Affinity Purified
Applications	WB IF
Species Reactivity	Human,Mouse,Rat
Immunogen Description	Recombinant protein of mouse Catalase
Conjugates	Unconjugated
Modification	Unmodification
Other Names	Cas1; Cs-1; Cas-1; 2210418N07
Accession No.	Swiss-Prot:P24270GenelD:12359
Uniprot	P24270
GenelD	12359
Calculated MW	Calculated MW: 60 kDa; Observed MW: 60 kDa
Concentration	0.3 mg/ml
Formulation	50mM Tris-Glycine(pH 7.4), 0.15M NaCl, 40% Glycerol, 0.01% Sodium azide and 0.05% BSA
Storage	Store at 4°C short term. Aliquot and store at -20°C long term. Avoid freeze/thaw cycles.

## Application Details

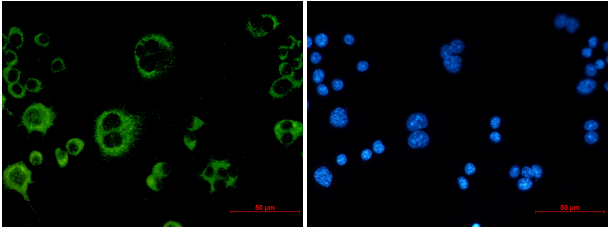
WB: 1/1000; ICC/IF: 1/20;

## Images



Western blot detection of Catalase in K562,Rat Brain,C6,3T3 cell lysates using Catalase Rabbit mAb(1:1000 diluted).Predicted band size:60kDa.Observed band size:60kDa.

Immunofluorescence of Catalase (green) in Raw264.7 using Catalase antibody at dilution 1/50, and DAPI(blue)



## Background

Swiss-Prot Acc.P24270.Occurs in almost all aerobically respiring organisms and serves to protect cells from the toxic effects of hydrogen peroxide. Promotes growth of cells.

Note: This product is for in vitro research use only