

## Catalase Rabbit mAb

Catalog No: #52194

Package Size: #52194-1 50ul #52194-2 100ul

Orders: order@signalwayantibody.com

Support: tech@signalwayantibody.com

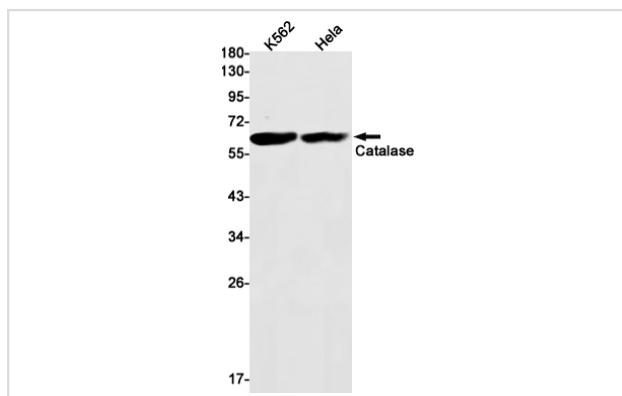
## Description

Product Name	Catalase Rabbit mAb
Host Species	Recombinant Rabbit
Clonality	Monoclonal antibody
Clone No.	S05-5D9
Isotype	Rabbit IgG
Purification	Affinity Purified
Applications	WB IHC IF
Species Reactivity	Human
Immunogen Description	A synthetic peptide of human Catalase
Conjugates	Unconjugated
Modification	Unmodification
Other Names	Cas1; CAT; Catalase; Cs1;
Accession No.	Swiss-Prot:P04040GenID:847
Uniprot	P04040
GenID	847
Calculated MW	Calculated MW: 60 kDa; Observed MW: 60 kDa
Concentration	0.3 mg/ml
Formulation	50mM Tris-Glycine(pH 7.4), 0.15M NaCl, 40% Glycerol, 0.01% Sodium azide and 0.05% BSA
Storage	Store at 4°C short term. Aliquot and store at -20°C long term. Avoid freeze/thaw cycles.

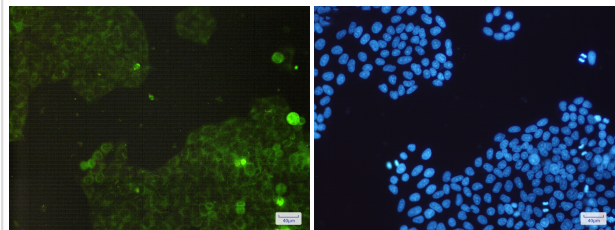
## Application Details

WB: 1/2000-1/10000; IHC: 1/20-1/50; ICC/IF: 1/20-1/100;

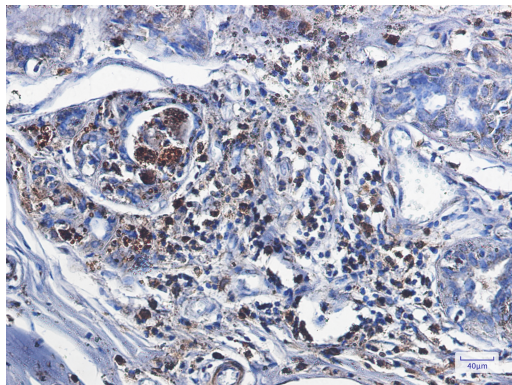
## Images



Western blot detection of Catalase in K562, HeLa cell lysates using Catalase Rabbit mAb (1:1000 diluted). Predicted band size: 60kDa. Observed band size: 60kDa.



Immunofluorescence of Catalase(green) in Hela cells using Catalase Rabbit mAb at dilution 1/200, and DAPI(blue)



Immunohistochemistry of Catalase in paraffin-embedded Human breast cancer tissue using Catalase Rabbit mAb at dilution 1/1

## Background

Swiss-Prot Acc.P04040.Occurs in almost all aerobically respiring organisms and serves to protect cells from the toxic effects of hydrogen peroxide. Promotes growth of cells including T-cells, B-cells, myeloid leukemia cells, melanoma cells, mastocytoma cells and normal and transformed fibroblast cells.

Note: This product is for in vitro research use only