

## Cathepsin B Rabbit mAb

Catalog No: #52195

Package Size: #52195-1 50ul #52195-2 100ul

Orders: order@signalwayantibody.com

Support: tech@signalwayantibody.com

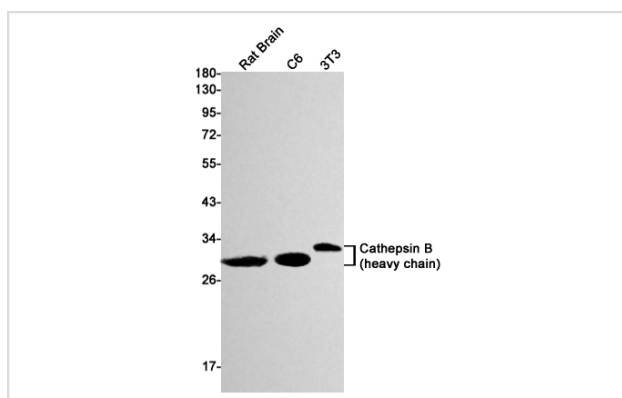
## Description

|                       |  |
|-----------------------|--|
| Product Name          | Cathepsin B Rabbit mAb   |
| Host Species          | Recombinant Rabbit   |
| Clonality             | Monoclonal antibody  |
| Clone No.             | S08-7H4  |
| Isotype               | Rabbit IgG   |
| Purification          | Affinity Purified  |
| Applications          | WB IF  |
| Species Reactivity    | Mouse,Rat  |
| Immunogen Description | Recombinant protein of mouse Cathepsin B   |
| Conjugates            | Unconjugated   |
| Modification          | Unmodification   |
| Other Names           | CB   |
| Accession No.         | Swiss-Prot:P10605GenelD:13030  |
| Uniprot               | P10605   |
| GenelD                | 13030  |
| Calculated MW         | Calculated MW: 37 kDa; Observed MW: 44,27,24 kDa   |
| Concentration         | 0.3 mg/ml  |
| Formulation           | 50mM Tris-Glycine(pH 7.4), 0.15M NaCl, 40% Glycerol, 0.01% Sodium azide and 0.05% BSA    |
| Storage               | Store at 4°C short term. Aliquot and store at -20°C long term. Avoid freeze/thaw cycles. |

## Application Details

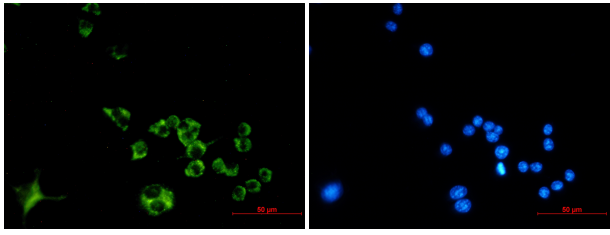
WB: 1/1000; ICC/IF: 1/50;

## Images



Western blot detection of Cathepsin B in Rat Brain, C6, 3T3 cell lysates using Cathepsin B Rabbit mAb (1:1000 diluted). Predicted band size: 37 kDa. Observed band size: 44, 27, 24 kDa.

Immunofluorescence of Cathepsin B (green) in Raw264.7 using Cathepsin B antibody at dilution 1/50, and DAPI(blue)



## Background

Swiss-Prot Acc.P10605.Thiol protease which is believed to participate in intracellular degradation and turnover of proteins. Cleaves matrix extracellular phosphoglycoprotein MEPE. Has also been implicated in tumor invasion and metastasis.

Note: This product is for in vitro research use only