

## Cathepsin Z Rabbit mAb

Catalog No: #52196

Package Size: #52196-1 50ul #52196-2 100ul

Orders: order@signalwayantibody.com

Support: tech@signalwayantibody.com

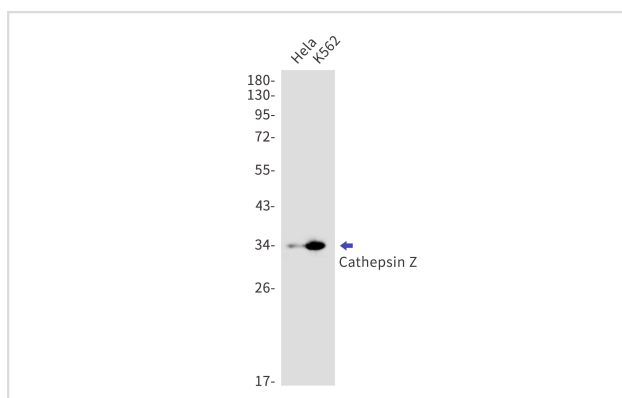
## Description

Product Name	Cathepsin Z Rabbit mAb
Host Species	Recombinant Rabbit
Clonality	Monoclonal antibody
Clone No.	S09-9J9
Isotype	Rabbit IgG
Purification	Affinity Purified
Applications	WB
Species Reactivity	Human,Mouse
Immunogen Description	Recombinant protein of human Cathepsin Z
Conjugates	Unconjugated
Modification	Unmodification
Other Names	CTSX
Accession No.	Swiss-Prot:Q9UBR2GeneID:1522
Uniprot	Q9UBR2
GeneID	1522
Calculated MW	Calculated MW: 34 kDa; Observed MW: 34 kDa
Concentration	0.3 mg/ml
Formulation	50mM Tris-Glycine(pH 7.4), 0.15M NaCl, 40% Glycerol, 0.01% Sodium azide and 0.05% BSA
Storage	Store at 4°C short term. Aliquot and store at -20°C long term. Avoid freeze/thaw cycles.

## Application Details

WB: 1/1000;

## Images



Western blot detection of Cathepsin Z in HeLa,K562 lysates using Cathepsin Z antibody.Predicted band size:34kDa.Observed band size:34kDa.

## Background

---

Swiss-Prot Acc.Q9UBR2.Exhibits carboxy-monopeptidase as well as carboxy-dipeptidase activity.

---

Note: This product is for in vitro research use only