

## CDA Rabbit mAb

Catalog No: #52210

Package Size: #52210-1 50ul #52210-2 100ul

Orders: order@signalwayantibody.com

Support: tech@signalwayantibody.com

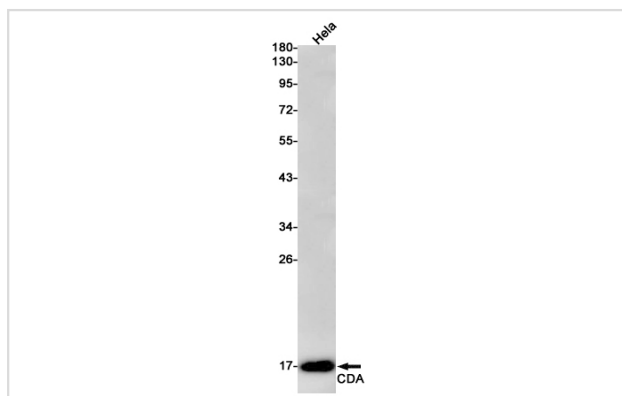
## Description

Product Name	CDA Rabbit mAb
Host Species	Recombinant Rabbit
Clonality	Monoclonal antibody
Clone No.	S08-4C9
Isotype	Rabbit IgG
Purification	Affinity Purified
Applications	WB IHC
Species Reactivity	Human
Immunogen Description	Recombinant protein of human CDA
Conjugates	Unconjugated
Modification	Unmodification
Other Names	cytidine deaminase;CDD
Accession No.	Swiss-Prot:P32320GenelD:978
Uniprot	P32320
GenelD	978
Calculated MW	Calculated MW: 16 kDa; Observed MW: 16 kDa
Concentration	0.3 mg/ml
Formulation	50mM Tris-Glycine(pH 7.4), 0.15M NaCl, 40% Glycerol, 0.01% Sodium azide and 0.05% BSA
Storage	Store at 4°C short term. Aliquot and store at -20°C long term. Avoid freeze/thaw cycles.

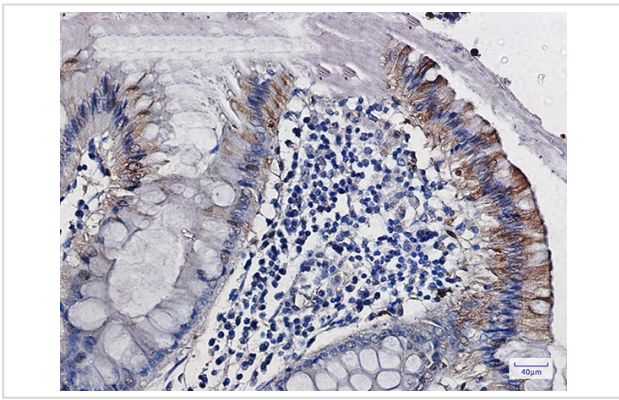
## Application Details

WB: 1/1000; IHC: 1/500;

## Images



Western blot detection of CDA in HeLa cell lysates using CDA Rabbit mAb(1:1000 diluted).Predicted band size:16kDa.Observed band size:16kDa.



Immunohistochemistry of CDA in paraffin-embedded Human colon cancer tissue using CDA Rabbit mAb at dilution 1/50

## Background

Swiss-Prot Acc.P32320.This enzyme scavenges exogenous and endogenous cytidine and 2'-deoxycytidine for UMP synthesis.

Note: This product is for in vitro research use only