

CDC25 Rabbit mAb

Catalog No: #52211

Package Size: #52211-1 50ul #52211-2 100ul

Orders: order@signalwayantibody.com

Support: tech@signalwayantibody.com

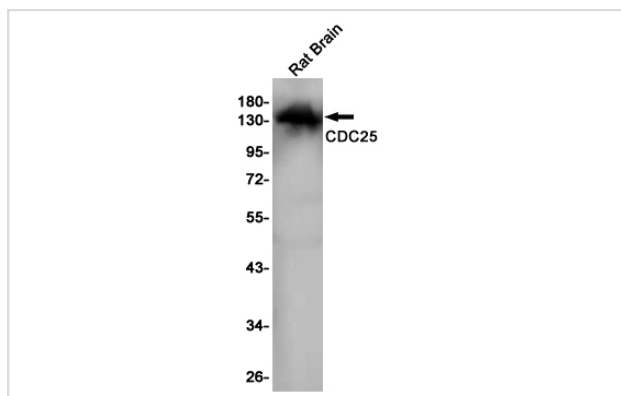
Description

Product Name	CDC25 Rabbit mAb
Host Species	Recombinant Rabbit
Clonality	Monoclonal antibody
Clone No.	S06-5H5
Isotype	Rabbit IgG
Purification	Affinity Purified
Applications	WB
Species Reactivity	Human,Rat
Immunogen Description	A synthetic peptide of human CDC25
Conjugates	Unconjugated
Modification	Unmodification
Other Names	GNRP; GRF1; CDC25; GRF55; CDC25L; H-GRF55; PP13187; ras-GRF1
Accession No.	Swiss-Prot:Q13972GeneID:5923
Uniprot	Q13972
GeneID	5923
Calculated MW	Calculated MW: 145 kDa; Observed MW: 145 kDa
Concentration	0.3 mg/ml
Formulation	50mM Tris-Glycine(pH 7.4), 0.15M NaCl, 40% Glycerol, 0.01% Sodium azide and 0.05% BSA
Storage	Store at 4°C short term. Aliquot and store at -20°C long term. Avoid freeze/thaw cycles.

Application Details

WB: 1/1000-1/5000

Images



Western blot detection of CDC25 in Rat Brain lysates using CDC25 Rabbit mAb(1:1000 diluted).Predicted band size:145KDa.Observed band size:145KDa.

Background

Swiss-Prot Acc.Q13972.Promotes the exchange of Ras-bound GDP by GTP.

Note: This product is for in vitro research use only