

ACAP2 Rabbit mAb

Catalog No: #52216

Package Size: #52216-1 50ul #52216-2 100ul

Orders: order@signalwayantibody.com

Support: tech@signalwayantibody.com

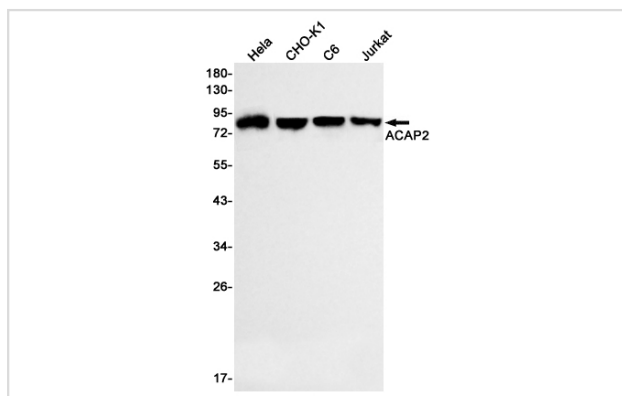
Description

Product Name	ACAP2 Rabbit mAb
Host Species	Recombinant Rabbit
Clonality	Monoclonal antibody
Clone No.	S05-8H3
Isotype	Rabbit IgG
Purification	Affinity Purified
Applications	WB
Species Reactivity	Human,Mouse,Rat
Immunogen Description	A synthetic peptide of human Centaurin beta 2
Conjugates	Unconjugated
Modification	Unmodification
Other Names	CENTB2; CNT-B2
Accession No.	Swiss-Prot:Q15057GeneID:23527
Uniprot	Q15057
GeneID	23527
Calculated MW	Calculated MW: 88 kDa; Observed MW: 88 kDa
Concentration	0.3 mg/ml
Formulation	50mM Tris-Glycine(pH 7.4), 0.15M NaCl, 40% Glycerol, 0.01% Sodium azide and 0.05% BSA
Storage	Store at 4°C short term. Aliquot and store at -20°C long term. Avoid freeze/thaw cycles.

Application Details

WB: 1/1000-1/2000;

Images



Western blot detection of ACAP2 in HeLa, CHO-K1, C6, Jurkat cell lysates using ACAP2 Rabbit mAb (1:500 diluted). Predicted band size: 88 kDa. Observed band size: 88 kDa.

Background

Swiss-Prot Acc.Q15057.GTPase-activating protein (GAP) for ADP ribosylation factor 6 (ARF6).

Note: This product is for in vitro research use only