

## CIP4 Rabbit mAb

Catalog No: #52221

Package Size: #52221-1 50ul #52221-2 100ul

Orders: order@signalwayantibody.com

Support: tech@signalwayantibody.com

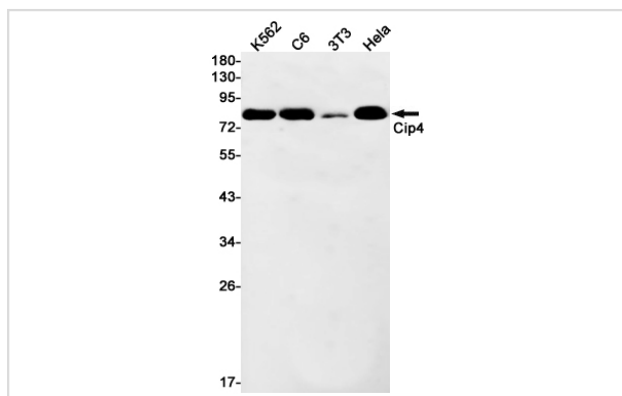
## Description

Product Name	CIP4 Rabbit mAb
Host Species	Recombinant Rabbit
Clonality	Monoclonal antibody
Clone No.	S01-6B7
Isotype	Rabbit IgG
Purification	Affinity Purified
Applications	WB
Species Reactivity	Human
Immunogen Description	A synthetic peptide of human Cip4
Conjugates	Unconjugated
Modification	Unmodification
Other Names	STP; CIP4; HSTP; STOT; TRIP-10
Accession No.	Swiss-Prot:Q15642GenelD:9322
Uniprot	Q15642
GenelD	9322
Calculated MW	Calculated MW: 68 kDa; Observed MW: 80 kDa
Concentration	0.3 mg/ml
Formulation	50mM Tris-Glycine(pH 7.4), 0.15M NaCl, 40% Glycerol, 0.01% Sodium azide and 0.05% BSA
Storage	Store at 4°C short term. Aliquot and store at -20°C long term. Avoid freeze/thaw cycles.

## Application Details

WB: 1/1000-1/5000

## Images



Western blot detection of Cip4 in K562, C6, 3T3, HeLa cell lysates using Cip4 Rabbit mAb (1:1000 diluted). Predicted band size: 68 kDa. Observed band size: 80 kDa.

## Background

---

Swiss-Prot Acc.Q15642. Required for translocation of GLUT4 to the plasma membrane in response to insulin signaling . Required to coordinate membrane tubulation with reorganization of the actin cytoskeleton during endocytosis. Binds to lipids such as phosphatidylinositol 4,5-bisphosphate and phosphatidylserine and promotes membrane invagination and the formation of tubules. Also promotes CDC42-induced actin polymerization by recruiting WASL/N-WASP which in turn activates the Arp2/3 complex. Actin polymerization may promote the fission of membrane tubules to form endocytic vesicles. Required for the formation of podosomes, actin-rich adhesion structures specific to monocyte-derived cells. May be required for the lysosomal retention of FASLG/FASL.

---

Note: This product is for in vitro research use only