

COG6 Rabbit mAb

Catalog No: #52223

Package Size: #52223-1 50ul #52223-2 100ul

Orders: order@signalwayantibody.com

Support: tech@signalwayantibody.com

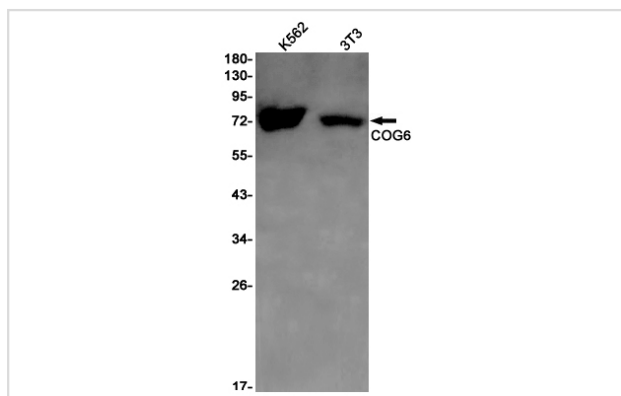
Description

| | |
|-----------------------|--|
| Product Name | COG6 Rabbit mAb |
| Host Species | Recombinant Rabbit |
| Clonality | Monoclonal antibody |
| Clone No. | S09-6K8 |
| Isotype | Rabbit IgG |
| Purification | Affinity Purified |
| Applications | WB |
| Species Reactivity | Human,Mouse |
| Immunogen Description | A synthetic peptide of human COG6 |
| Conjugates | Unconjugated |
| Modification | Unmodification |
| Other Names | COD2; SHNS; CDG2L |
| Accession No. | Swiss-Prot:Q9Y2V7GeneID:57511 |
| Uniprot | Q9Y2V7 |
| GeneID | 57511 |
| Calculated MW | Calculated MW: 73 kDa; Observed MW: 73 kDa |
| Concentration | 0.3 mg/ml |
| Formulation | 50mM Tris-Glycine(pH 7.4), 0.15M NaCl, 40% Glycerol, 0.01% Sodium azide and 0.05% BSA |
| Storage | Store at 4°C short term. Aliquot and store at -20°C long term. Avoid freeze/thaw cycles. |

Application Details

WB: 1/1000

Images



Western blot detection of COG6 in K562,3T3 cell lysates using COG6 Rabbit mAb(1:1000 diluted).Predicted band size:73kDa.Observed band size:73kDa.

Background

Swiss-Prot Acc.Q9Y2V7.Required for normal Golgi function.

Note: This product is for in vitro research use only