

CRMP3 Rabbit mAb

Catalog No: #52226

Package Size: #52226-1 50ul #52226-2 100ul

Orders: order@signalwayantibody.com

Support: tech@signalwayantibody.com

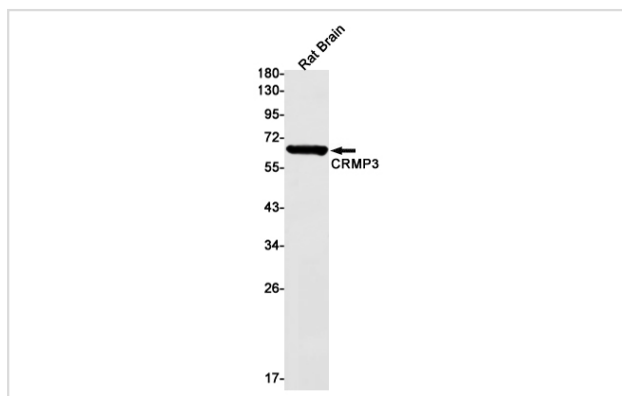
Description

Product Name	CRMP3 Rabbit mAb
Host Species	Recombinant Rabbit
Clonality	Monoclonal antibody
Clone No.	S01-6G1
Isotype	Rabbit IgG
Purification	Affinity Purified
Applications	WB
Species Reactivity	Human,Mouse,Rat
Immunogen Description	A synthetic peptide of human CRMP3
Conjugates	Unconjugated
Modification	Unmodification
Other Names	CRMP3; DRP-4; ULIP4
Accession No.	Swiss-Prot:O14531GeneID:10570
Uniprot	O14531
GeneID	10570
Calculated MW	Calculated MW: 62 kDa; Observed MW: 62 kDa
Concentration	0.3 mg/ml
Formulation	50mM Tris-Glycine(pH 7.4), 0.15M NaCl, 40% Glycerol, 0.01% Sodium azide and 0.05% BSA
Storage	Store at 4°C short term. Aliquot and store at -20°C long term. Avoid freeze/thaw cycles.

Application Details

WB: 1/2000-1/10000

Images



Western blot detection of CRMP3 in Rat Brain lysates using CRMP3 Rabbit mAb(1:1000 diluted).Predicted band size:62kDa.Observed band size:62kDa.

Background

Swiss-Prot Acc.O14531.Necessary for signaling by class 3 semaphorins and subsequent remodeling of the cytoskeleton. Plays a role in axon guidance, neuronal growth cone collapse and cell migration .

Note: This product is for in vitro research use only