

## CSHL1 Rabbit mAb

Catalog No: #52227

Package Size: #52227-1 50ul #52227-2 100ul

Orders: order@signalwayantibody.com

Support: tech@signalwayantibody.com

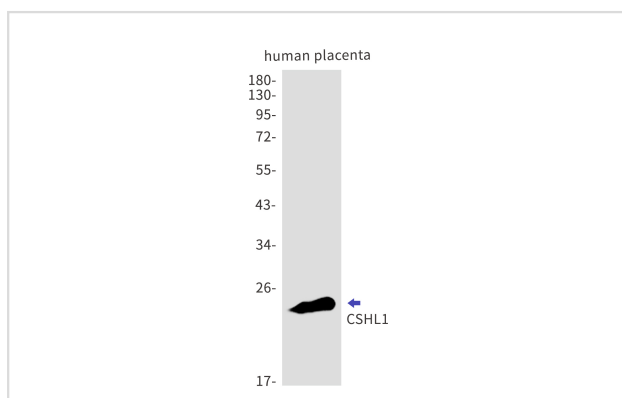
## Description

Product Name	CSHL1 Rabbit mAb
Host Species	Recombinant Rabbit
Clonality	Monoclonal antibody
Clone No.	S06-9I3
Isotype	Rabbit IgG
Purification	Affinity Purified
Applications	WB
Species Reactivity	Human
Immunogen Description	Recombinant protein of human CSHL1
Conjugates	Unconjugated
Modification	Unmodification
Other Names	Lactogen-like;Chorionic somatomammotropin-like
Accession No.	Swiss-Prot:Q14406GeneID:1444
Uniprot	Q14406
GeneID	1444
Calculated MW	Calculated MW: 25 kDa; Observed MW: 25 kDa
Concentration	0.3 mg/ml
Formulation	50mM Tris-Glycine(pH 7.4), 0.15M NaCl, 40% Glycerol, 0.01% Sodium azide and 0.05% BSA
Storage	Store at 4°C short term. Aliquot and store at -20°C long term. Avoid freeze/thaw cycles.

## Application Details

WB: 1/2000-1/10000;

## Images



Western blot detection of CSHL1 in human placenta cell lysates using CSHL1 Rabbit mAb(1:1000 diluted).Predicted band size:25kDa.Observed band size:25kDa.

## Background

---

Swiss-Prot Acc.Q14406.May be a novel gestational hormone required to compensate for absence of other members of the GH/CS cluster during gestation.

---

Note: This product is for in vitro research use only