

CTP Synthase Rabbit mAb

Catalog No: #52229

Package Size: #52229-1 50ul #52229-2 100ul

Orders: order@signalwayantibody.com

Support: tech@signalwayantibody.com

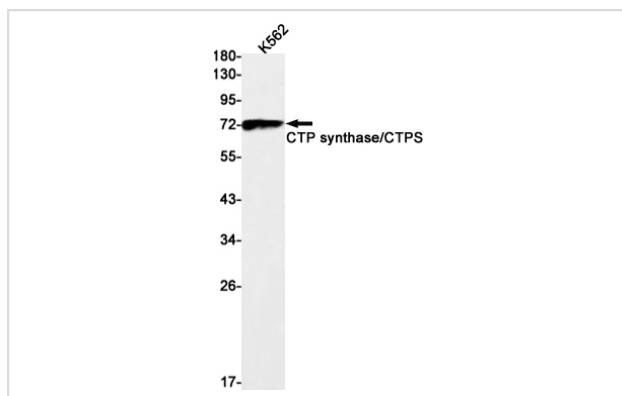
Description

Product Name	CTP Synthase Rabbit mAb
Host Species	Recombinant Rabbit
Clonality	Monoclonal antibody
Clone No.	S01-9E5
Isotype	Rabbit IgG
Purification	Affinity Purified
Applications	WB
Species Reactivity	Human,Mouse,Rat
Immunogen Description	A synthetic peptide of human CTP synthase
Conjugates	Unconjugated
Modification	Unmodification
Other Names	CTPS; GATD5; IMD24
Accession No.	Swiss-Prot:P17812GenelD:1503
Uniprot	P17812
GenelD	1503
Calculated MW	Calculated MW: 67 kDa; Observed MW: 67 kDa
Concentration	0.3 mg/ml
Formulation	50mM Tris-Glycine(pH 7.4), 0.15M NaCl, 40% Glycerol, 0.01% Sodium azide and 0.05% BSA
Storage	Store at 4°C short term. Aliquot and store at -20°C long term. Avoid freeze/thaw cycles.

Application Details

WB: 1/1000;

Images



Western blot detection of CTP synthase/CTPS in K562 cell lysates using CTP synthase/CTPS Rabbit mAb(1:1000 diluted).Predicted band size:67kDa.Observed band size:67kDa.

Background

Swiss-Prot Acc.P17812.This enzyme is involved in the de novo synthesis of CTP, a precursor of DNA, RNA and phospholipids. Catalyzes the ATP-dependent amination of UTP to CTP with either L-glutamine or ammonia as a source of nitrogen. This enzyme and its product, CTP, play a crucial role in the proliferation of activated lymphocytes and therefore in immunity.

Note: This product is for in vitro research use only