

Cyclin E1 Rabbit mAb

Catalog No: #52237

Package Size: #52237-1 50ul #52237-2 100ul

Orders: order@signalwayantibody.com

Support: tech@signalwayantibody.com

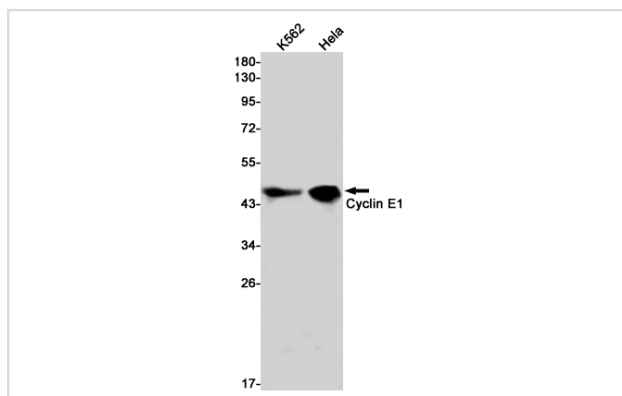
Description

Product Name	Cyclin E1 Rabbit mAb
Host Species	Recombinant Rabbit
Clonality	Monoclonal antibody
Clone No.	S08-2A1
Isotype	Rabbit IgG
Purification	Affinity Purified
Applications	WB
Species Reactivity	Human
Immunogen Description	A synthetic peptide of human Cyclin E1
Conjugates	Unconjugated
Modification	Unmodification
Other Names	CCNE; pCCNE1
Accession No.	Swiss-Prot:P24864GenelD:898
Uniprot	P24864
GenelD	898
Calculated MW	Calculated MW: 47 kDa; Observed MW: 47 kDa
Concentration	0.3 mg/ml
Formulation	50mM Tris-Glycine(pH 7.4), 0.15M NaCl, 40% Glycerol, 0.01% Sodium azide and 0.05% BSA
Storage	Store at 4°C short term. Aliquot and store at -20°C long term. Avoid freeze/thaw cycles.

Application Details

WB: 1/1000-1/5000

Images



Western blot detection of Cyclin E1 in K562, HeLa cell lysates using Cyclin E1 Rabbit mAb (1:1000 diluted). Predicted band size: 47 kDa. Observed band size: 47 kDa.

Background

Swiss-Prot Acc.P24864.Essential for the control of the cell cycle at the G1/S (start) transition.

Note: This product is for in vitro research use only