

Cyclophilin B Rabbit mAb

Catalog No: #52239

Package Size: #52239-1 50ul #52239-2 100ul

Orders: order@signalwayantibody.com

Support: tech@signalwayantibody.com

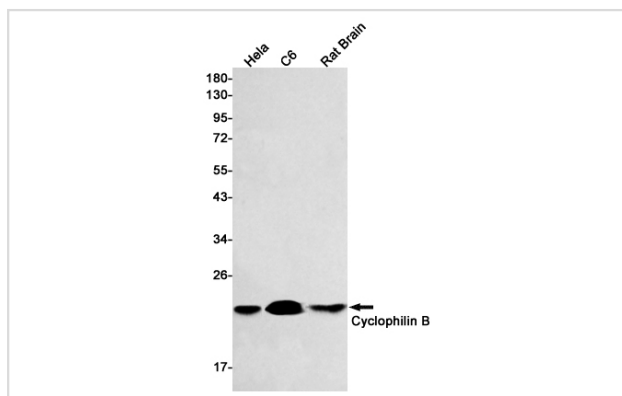
Description

Product Name	Cyclophilin B Rabbit mAb
Host Species	Recombinant Rabbit
Clonality	Monoclonal antibody
Clone No.	S01-2F8
Isotype	Rabbit IgG
Purification	Affinity Purified
Applications	WB
Species Reactivity	Human,Mouse,Rat
Immunogen Description	A synthetic peptide of human Cyclophilin B
Conjugates	Unconjugated
Modification	Unmodification
Other Names	B; OI9; CYPB; SCYLP; CYP-S1; HEL-S-39
Accession No.	Swiss-Prot:P23284GenelD:5479
Uniprot	P23284
GenelD	5479
Calculated MW	Calculated MW: 24 kDa; Observed MW: 20 kDa
Concentration	0.3 mg/ml
Formulation	50mM Tris-Glycine(pH 7.4), 0.15M NaCl, 40% Glycerol, 0.01% Sodium azide and 0.05% BSA
Storage	Store at 4°C short term. Aliquot and store at -20°C long term. Avoid freeze/thaw cycles.

Application Details

WB: 1/2000

Images



Western blot detection of Cyclophilin B in HeLa,C6,Rat Brain lysates using Cyclophilin B Rabbit mAb(1:500 diluted).Predicted band size:24kDa.Observed band size:20kDa.

Background

Swiss-Prot Acc.P23284.PPIase that catalyzes the cis-trans isomerization of proline imidic peptide bonds in oligopeptides and may therefore assist protein folding.

Note: This product is for in vitro research use only