

Cytochrome P450 1B1 Rabbit mAb

Catalog No: #52242

Package Size: #52242-1 50ul #52242-2 100ul

Orders: order@signalwayantibody.com

Support: tech@signalwayantibody.com

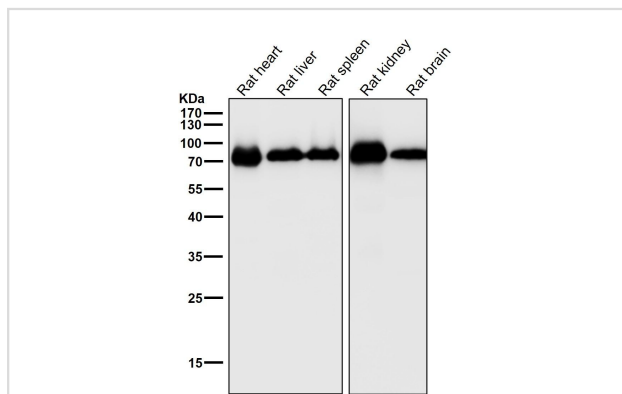
Description

Product Name	Cytochrome P450 1B1 Rabbit mAb
Clone No.	S02-5A3
Isotype	Rabbit IgG
Purification	Affinity Purified
Applications	WB IHC
Species Reactivity	Human,Mouse,Rat
Immunogen Description	Recombinant protein of human CYP1B1
Conjugates	Unconjugated
Modification	Unmodification
Other Names	CP1B; Cyp1b1; CYPIB1; Cytochrome P450 1B1; GLC3A; P4501B1;
Accession No.	Swiss-Prot:Q16678GeneID:1545
Uniprot	Q16678
GeneID	1545
Calculated MW	Calculated MW: 61 kDa; Observed MW: 61 kDa
Formulation	Rabbit IgG in phosphate buffered saline , pH 7.4, 150mM NaCl, 0.02% sodium azide and 50% glycerol.
Storage	Store at 4°C short term. Aliquot and store at -20°C long term. Avoid freeze/thaw cycles.

Application Details

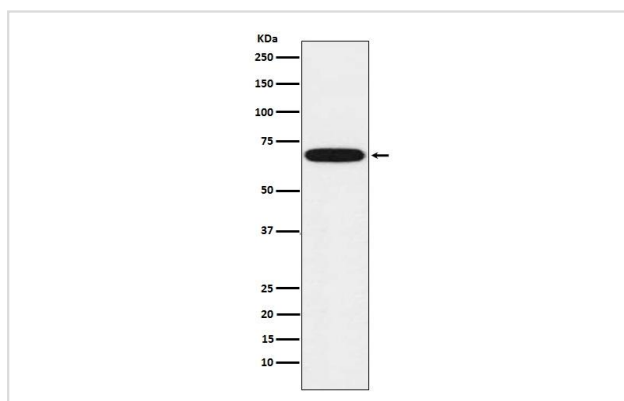
WB 1:500-1:2000 IHC 1:50-1:200

Images



All lanes use the Antibody at 1:2K dilution for 1 hour at room temperature.

Western blot analysis of CYP1B1 expression in Human fetal kidney lysate.



Background

Cytochromes P450 are a group of heme-thiolate monooxygenases. In liver microsomes, this enzyme is involved in an NADPH-dependent electron transport pathway. It oxidizes a variety of structurally unrelated compounds, including steroids, fatty acids, and xenobiotics.

Note: This product is for in vitro research use only