

## Cytochrome C Oxidase subunit Vic Rabbit mAb

Catalog No: #52244

Package Size: #52244-1 50ul #52244-2 100ul

Orders: order@signalwayantibody.com

Support: tech@signalwayantibody.com

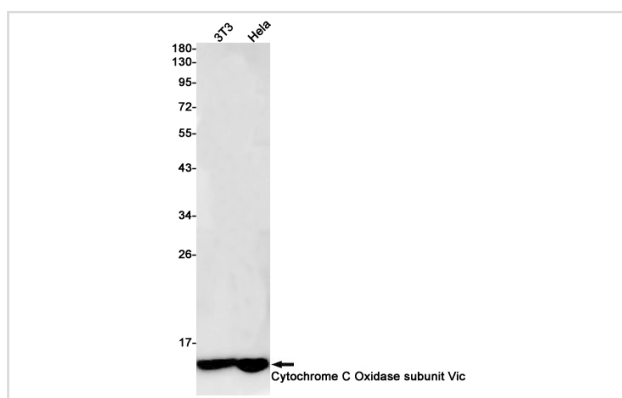
## Description

Product Name	Cytochrome C Oxidase subunit Vic Rabbit mAb
Host Species	Recombinant Rabbit
Clonality	Monoclonal antibody
Clone No.	S06-1D9
Isotype	Rabbit IgG
Purification	Affinity Purified
Applications	WB IHC
Species Reactivity	Human,Mouse,Rat
Immunogen Description	A synthetic peptide of human Cytochrome C Oxidase subunit Vic
Conjugates	Unconjugated
Modification	Unmodification
Other Names	cytochrome c oxidase subunit 6C
Accession No.	Swiss-Prot:P09669GenelD:1345
Uniprot	P09669
GenelD	1345
Calculated MW	Calculated MW: 9 kDa; Observed MW: 12 kDa
Concentration	0.3 mg/ml
Formulation	50mM Tris-Glycine(pH 7.4), 0.15M NaCl, 40% Glycerol, 0.01% Sodium azide and 0.05% BSA
Storage	Store at 4°C short term. Aliquot and store at -20°C long term. Avoid freeze/thaw cycles.

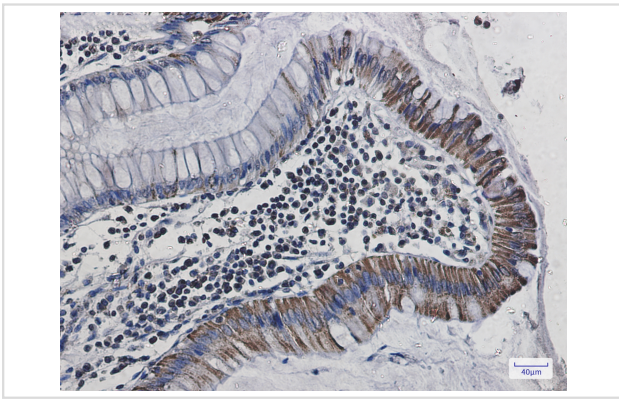
## Application Details

WB: 1/1000; IHC: 1/20

## Images



Western blot detection of Cytochrome C Oxidase subunit Vic in 3T3, HeLa cell lysates using Cytochrome C Oxidase subunit Vic Rabbit mAb (1:1000 diluted). Predicted band size: 9kDa. Observed band size: 12kDa.



Immunohistochemistry of Cytochrome C Oxidase subunit Vic in paraffin-embedded Human colon cancer tissue using Cytochrome C Oxidase subunit Vic Rabbit mAb at dilution 1/20

## Background

Swiss-Prot Acc.P09669. This protein is one of the nuclear-coded polypeptide chains of cytochrome c oxidase, the terminal oxidase in mitochondrial electron transport.

Note: This product is for in vitro research use only