

## E2F1 Rabbit mAb

Catalog No: #52259

Package Size: #52259-1 50ul #52259-2 100ul

Orders: order@signalwayantibody.com

Support: tech@signalwayantibody.com

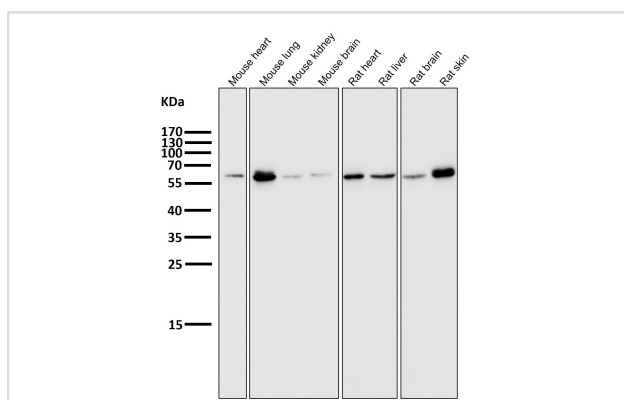
## Description

Product Name	E2F1 Rabbit mAb
Clone No.	S03-5G3
Isotype	Rabbit IgG
Purification	Affinity-chromatography
Applications	WB,IHC,ICC/IF,IP,FC
Species Reactivity	Human,Mouse,Rat
Immunogen Description	A synthesized peptide derived from human E2F1
Conjugates	Unconjugated
Modification	Unmodification
Other Names	RBP3; E2F-1; RBAP1; RBBP3
Accession No.	65kDa
Uniprot	Q01094
GeneID	1869
Calculated MW	Calculated MW: 47 kDa; Observed MW: 70 kDa
Concentration	0.4 mg/ml
Formulation	Rabbit IgG in phosphate buffered saline , pH 7.4, 150mM NaCl, 0.02% sodium azide and 50% glycerol.
Storage	Store at 4°C short term. Aliquot and store at -20°C long term. Avoid freeze/thaw cycles.

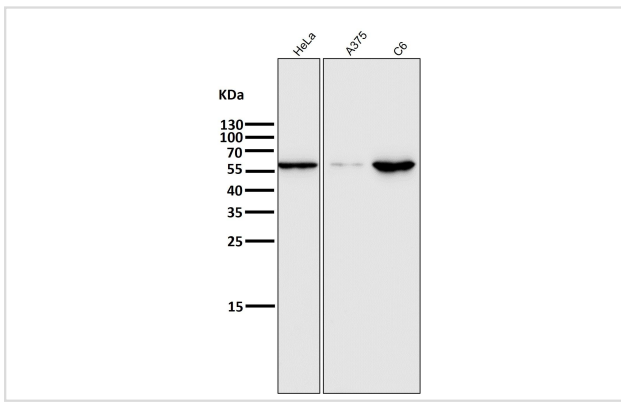
## Application Details

WB 1:500~1:2000 IHC 1:50~1:200 ICC/IF 1:50~1:200 IP 1:50 FC 1:50

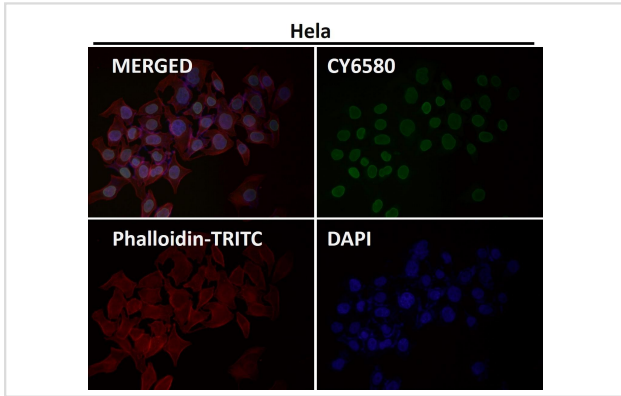
## Images



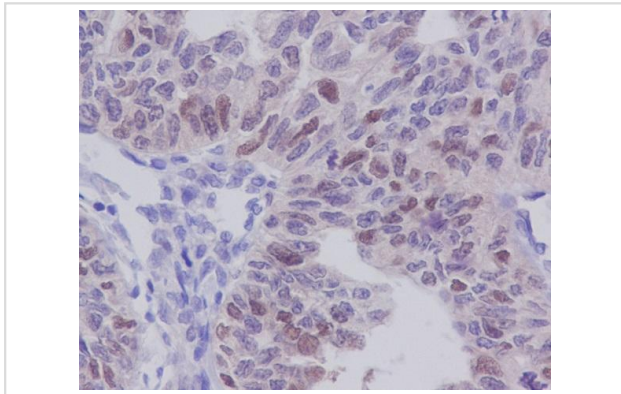
All lanes use the Antibody at 1:1K dilution for 1 hour at room temperature.



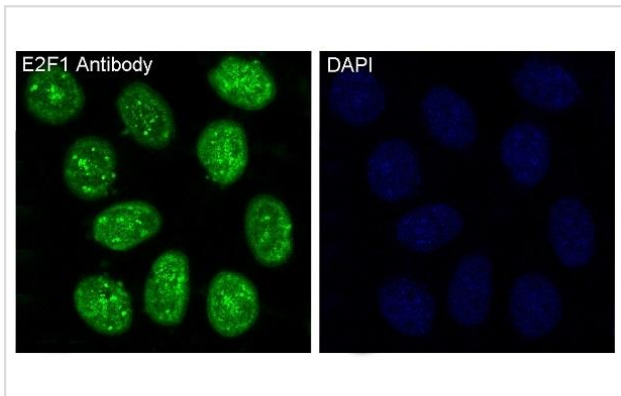
All lanes use the Antibody at 1:1K dilution for 1 hour at room temperature.



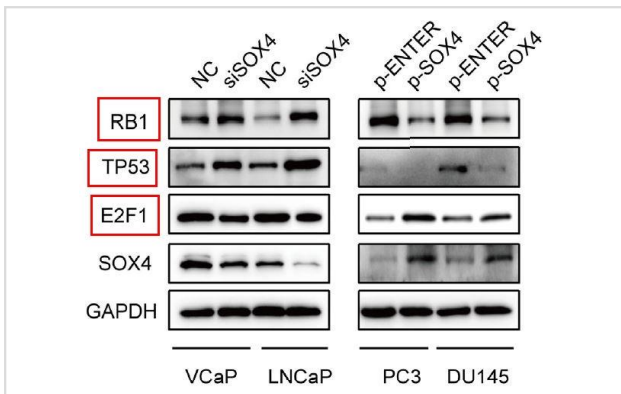
Immunofluorescent analysis using the Antibody at 1:50 dilution.



Immunohistochemical analysis of paraffin-embedded human ovary carcinoma, using E2F1 Antibody.



Immunofluorescent analysis of HeLa cells, using E2F1 Antibody.



The SOX4/miR-17-92/RB1 Axis Promotes Prostate Cancer Progression. -Neoplasia

## Background

---

The protein encoded by this gene is a member of the E2F family of transcription factors. The E2F family plays a crucial role in the control of cell cycle and action of tumor suppressor proteins and is also a target of the transforming proteins of small DNA tumor viruses.

---

Note: This product is for in vitro research use only