

E2F4 Rabbit mAb

Catalog No: #52260

Package Size: #52260-1 50ul #52260-2 100ul

Orders: order@signalwayantibody.com

Support: tech@signalwayantibody.com

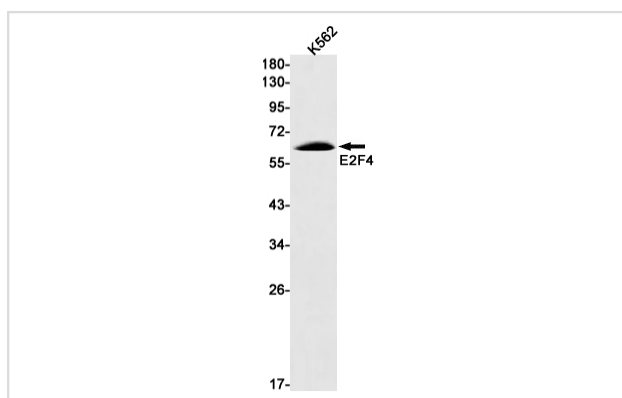
Description

Product Name	E2F4 Rabbit mAb
Host Species	Recombinant Rabbit
Clonality	Monoclonal antibody
Clone No.	S09-7E6
Isotype	Rabbit IgG
Purification	Affinity Purified
Applications	WB
Species Reactivity	Human
Immunogen Description	A synthetic peptide of human E2F4
Conjugates	Unconjugated
Modification	Unmodification
Other Names	E2F-4
Accession No.	Swiss-Prot:Q16254GeneID:1874
Uniprot	Q16254
GeneID	1874
Calculated MW	Calculated MW: 44 kDa; Observed MW: 65 kDa
Concentration	0.3 mg/ml
Formulation	50mM Tris-Glycine(pH 7.4), 0.15M NaCl, 40% Glycerol, 0.01% Sodium azide and 0.05% BSA
Storage	Store at 4°C short term. Aliquot and store at -20°C long term. Avoid freeze/thaw cycles.

Application Details

WB: 1/1000

Images



Western blot detection of E2F4 in K562 cell lysates using E2F4 Rabbit mAb(1:1000 diluted). Predicted band size:44kDa.Observed band size:65kDa.

Background

Swiss-Prot Acc.Q16254. Transcription activator that binds DNA cooperatively with DP proteins through the E2 recognition site, 5'-TTTC[CG]CGC-3'; found in the promoter region of a number of genes whose products are involved in cell cycle regulation or in DNA replication. The DRTF1/E2F complex functions in the control of cell-cycle progression from G1 to S phase. E2F4 binds with high affinity to RBL1 and RBL2. In some instances can also bind RB1. Specifically required for multiciliate cell differentiation: together with MCIDAS and E2F5, binds and activate genes required for centriole biogenesis.

Note: This product is for in vitro research use only