

ENO3 Rabbit mAb

Catalog No: #52266

Package Size: #52266-1 50ul #52266-2 100ul

Orders: order@signalwayantibody.com

Support: tech@signalwayantibody.com

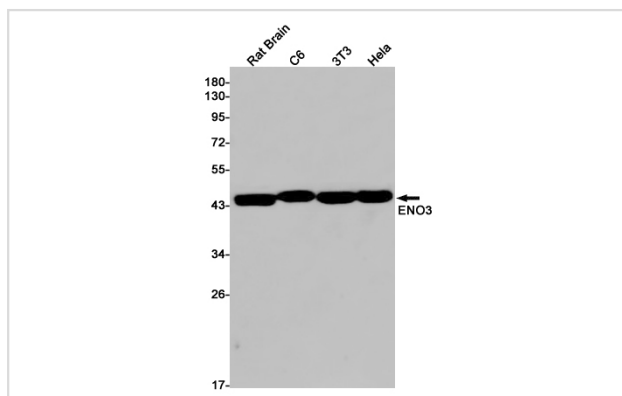
Description

Product Name	ENO3 Rabbit mAb
Host Species	Recombinant Rabbit
Clonality	Monoclonal antibody
Clone No.	S07-5B2
Isotype	Rabbit IgG
Purification	Affinity Purified
Applications	WB IF
Species Reactivity	Human,Mouse,Rat
Immunogen Description	A synthetic peptide of human ENO3
Conjugates	Unconjugated
Modification	Unmodification
Other Names	MSE; GSD13
Accession No.	Swiss-Prot:P13929GenelD:2027
Uniprot	P13929
GenelD	2027
Calculated MW	Calculated MW: 47 kDa; Observed MW: 47 kDa
Concentration	0.3 mg/ml
Formulation	50mM Tris-Glycine(pH 7.4), 0.15M NaCl, 40% Glycerol, 0.01% Sodium azide and 0.05% BSA
Storage	Store at 4°C short term. Aliquot and store at -20°C long term. Avoid freeze/thaw cycles.

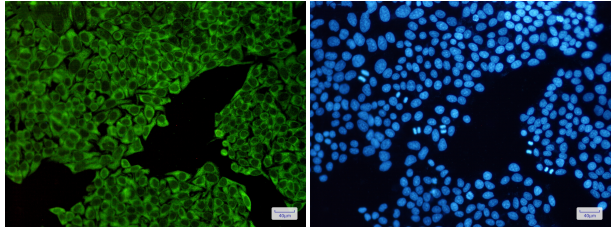
Application Details

WB: 1/1000; ICC/IF: 1/100;

Images



Western blot detection of ENO3 in Rat Brain, C6, 3T3, HeLa cell lysates using ENO3 Rabbit mAb (1:1000 diluted). Predicted band size: 47kDa. Observed band size: 47kDa.



Immunofluorescence of ENO1/ENO2/ENO3(green) in HeLa cells using ENO1/ENO2/ENO3 Rabbit mAb at dilution 1/50, and DAPI(blue)

Background

Swiss-Prot Acc.P13929. Appears to have a function in striated muscle development and regeneration.

Note: This product is for in vitro research use only