

ENSA Rabbit mAb

Catalog No: #52267

Package Size: #52267-1 50ul #52267-2 100ul

Orders: order@signalwayantibody.com

Support: tech@signalwayantibody.com

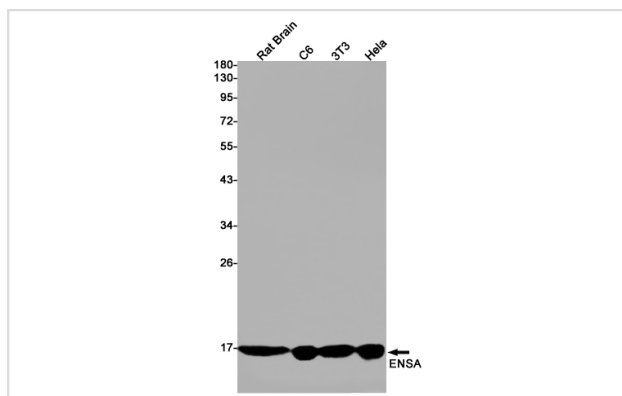
Description

Product Name	ENSA Rabbit mAb
Host Species	Recombinant Rabbit
Clonality	Monoclonal antibody
Clone No.	S08-1G6
Isotype	Rabbit IgG
Purification	Affinity Purified
Applications	WB
Species Reactivity	Human,Mouse,Rat
Immunogen Description	A synthetic peptide of human ENSA
Conjugates	Unconjugated
Modification	Unmodification
Other Names	ARPP-19e
Accession No.	Swiss-Prot:O43768GeneID:2029
Uniprot	O43768
GeneID	2029
Calculated MW	Calculated MW: 13 kDa; Observed MW: 15 kDa
Concentration	0.3 mg/ml
Formulation	50mM Tris-Glycine(pH 7.4), 0.15M NaCl, 40% Glycerol, 0.01% Sodium azide and 0.05% BSA
Storage	Store at 4°C short term. Aliquot and store at -20°C long term. Avoid freeze/thaw cycles.

Application Details

WB: 1/1000-1/5000;

Images



Western blot detection of ENSA in Rat Brain,C6,3T3,Hela cell lysates using ENSA Rabbit mAb(1:1000 diluted).Predicted band size:13kDa.Observed band size:15kDa.

Background

Swiss-Prot Acc.O43768. Protein phosphatase inhibitor that specifically inhibits protein phosphatase 2A (PP2A) during mitosis. When phosphorylated at Ser-67 during mitosis, specifically interacts with PPP2R2D (PR55-delta) and inhibits its activity, leading to inactivation of PP2A, an essential condition to keep cyclin-B1-CDK1 activity high during M phase . Also acts as a stimulator of insulin secretion by interacting with sulfonylurea receptor (ABCC8), thereby preventing sulfonylurea from binding to its receptor and reducing K(ATP) channel currents.

Note: This product is for in vitro research use only