

## EpCAM Rabbit mAb

Catalog No: #52268

Package Size: #52268-1 50ul #52268-2 100ul

Orders: order@signalwayantibody.com

Support: tech@signalwayantibody.com

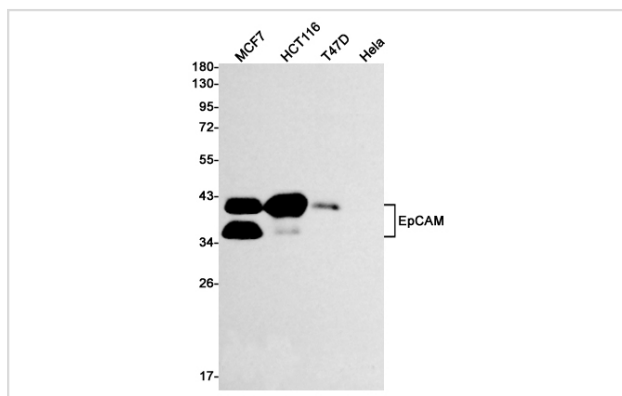
## Description

Product Name	EpCAM Rabbit mAb
Host Species	Recombinant Rabbit
Clonality	Monoclonal antibody
Clone No.	S08-8D1
Isotype	Rabbit IgG
Purification	Affinity Purified
Applications	WB IHC IF
Species Reactivity	Human,Mouse,Rat
Immunogen Description	Recombinant protein of human EpCAM
Conjugates	Unconjugated
Modification	Unmodification
Other Names	ESA; KSA; M4S1; MK-1; DIAR5; EGP-2; EGP40; KS1/4; MIC18; TROP1; EGP314; HNPCC8; TACSTD1
Accession No.	Swiss-Prot:P16422GenelD:4072
Uniprot	P16422
GenelD	4072
Calculated MW	Calculated MW: 35 kDa; Observed MW: 35/39 kDa
Concentration	0.3 mg/ml
Formulation	50mM Tris-Glycine(pH 7.4), 0.15M NaCl, 40% Glycerol, 0.01% Sodium azide and 0.05% BSA
Storage	Store at 4°C short term. Aliquot and store at -20°C long term. Avoid freeze/thaw cycles.

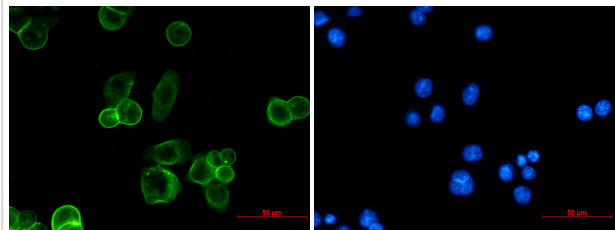
## Application Details

WB: 1/1000; IHC: 1/500; ICC/IF: 1/20;

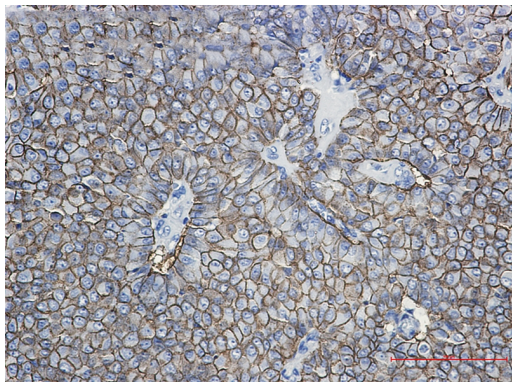
## Images



Western blot detection of EpCAM in MCF7,HCT116,T47D,Hela cell lysates using EpCAM Rabbit mAb(1:1000 diluted).Predicted band size:35kDa.Observed band size:40kDa.



Immunofluorescence of EpCAM (green) in MCF-7 using EpCAM antibody at dilution 1/2, and DAPI(blue)



Immunohistochemistry of EpCAM in paraffin-embedded Human breast cancer tissue using EpCAM Rabbit mAb at dilution 1/50

## Background

Swiss-Prot Acc.P16422.May act as a physical homophilic interaction molecule between intestinal epithelial cells (IECs) and intraepithelial lymphocytes (IELs) at the mucosal epithelium for providing immunological barrier as a first line of defense against mucosal infection. Plays a role in embryonic stem cells proliferation and differentiation. Up-regulates the expression of FABP5, MYC and cyclins A and E.

Note: This product is for in vitro research use only