

Epsin 1 Rabbit mAb

Catalog No: #52269

Package Size: #52269-1 50ul #52269-2 100ul

Orders: order@signalwayantibody.com

Support: tech@signalwayantibody.com

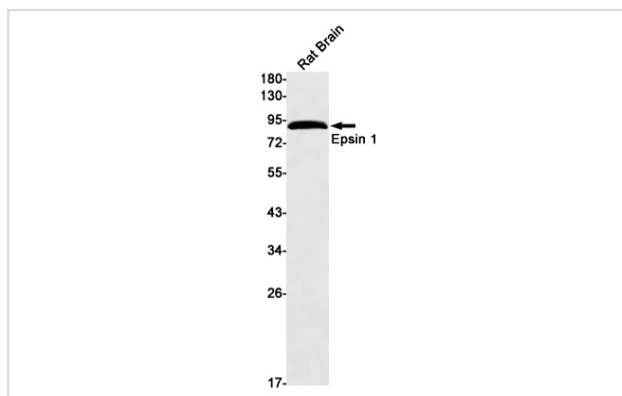
Description

Product Name	Epsin 1 Rabbit mAb
Host Species	Recombinant Rabbit
Clonality	Monoclonal antibody
Clone No.	S02-2D1
Isotype	Rabbit IgG
Purification	Affinity Purified
Applications	WB
Species Reactivity	Human,Mouse,Rat
Immunogen Description	A synthetic peptide of human Epsin 1
Conjugates	Unconjugated
Modification	Unmodification
Other Names	Epsin 1
Accession No.	Swiss-Prot:Q9Y6I3GenelD:29924
Uniprot	Q9Y6I3
GenelD	29924
Calculated MW	Calculated MW: 60 kDa; Observed MW: 90 kDa
Concentration	0.3 mg/ml
Formulation	50mM Tris-Glycine(pH 7.4), 0.15M NaCl, 40% Glycerol, 0.01% Sodium azide and 0.05% BSA
Storage	Store at 4°C short term. Aliquot and store at -20°C long term. Avoid freeze/thaw cycles.

Application Details

WB: 1/1000

Images



Western blot detection of Epsin 1 in Rat Brain lysates using Epsin 1 Rabbit mAb(1:1000 diluted).Predicted band size:60kDa.Observed band size:90kDa.

Background

Swiss-Prot Acc.Q9Y6I3. Binds to membranes enriched in phosphatidylinositol 4,5-bisphosphate (PtdIns(4,5)P₂). Modifies membrane curvature and facilitates the formation of clathrin-coated invaginations . Regulates receptor-mediated endocytosis.

Note: This product is for in vitro research use only