

## ERCC1 Rabbit mAb

Catalog No: #52270

Package Size: #52270-1 50ul #52270-2 100ul

Orders: order@signalwayantibody.com

Support: tech@signalwayantibody.com

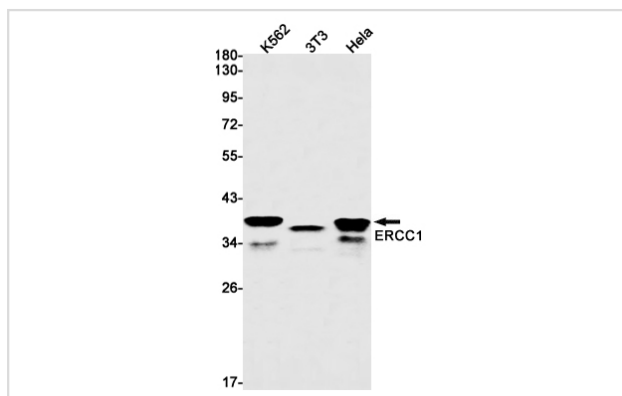
## Description

Product Name	ERCC1 Rabbit mAb
Host Species	Recombinant Rabbit
Clonality	Monoclonal antibody
Clone No.	S08-7E3
Isotype	Rabbit IgG
Purification	Affinity Purified
Applications	WB IF
Species Reactivity	Human,Mouse
Immunogen Description	A synthetic peptide of human ERCC1
Conjugates	Unconjugated
Modification	Unmodification
Other Names	UV20; COFS4; RAD10
Accession No.	Swiss-Prot:P07992GenelD:2067
Uniprot	P07992
GenelD	2067
Calculated MW	Calculated MW: 33 kDa; Observed MW: 39 kDa
Concentration	0.3 mg/ml
Formulation	50mM Tris-Glycine(pH 7.4), 0.15M NaCl, 40% Glycerol, 0.01% Sodium azide and 0.05% BSA
Storage	Store at 4°C short term. Aliquot and store at -20°C long term. Avoid freeze/thaw cycles.

## Application Details

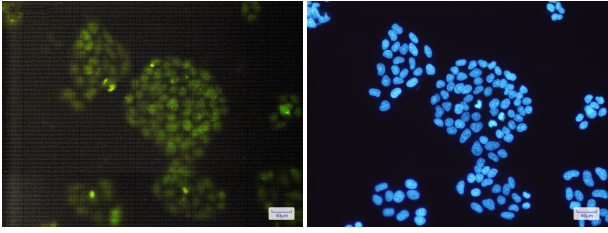
WB: 1/1000-1/5000; ICC/IF: 1/20-1/100;

## Images



Western blot detection of ERCC1 in K562,3T3,HeLa cell lysates using ERCC1 Rabbit mAb(1:1000 diluted).Predicted band size:33kDa.Observed band size:39kDa.

Immunofluorescence of ERCC1(green) in HeLa cells using ERCC1 Rabbit mAb at dilution 1/200, and DAPI(blue)



## Background

Swiss-Prot Acc.P07992.Isoform 1: Non-catalytic component of a structure-specific DNA repair endonuclease responsible for the 5'-incision during DNA repair. Responsible, in conjunction with SLX4, for the first step in the repair of interstrand cross-links (ICL). Participates in the processing of anaphase bridge-generating DNA structures, which consist in incompletely processed DNA lesions arising during S or G2 phase, and can result in cytokinesis failure. Also required for homology-directed repair (HDR) of DNA double-strand breaks, in conjunction with SLX4.

Note: This product is for in vitro research use only