

ERp72 Rabbit mAb

Catalog No: #52271

Package Size: #52271-1 50ul #52271-2 100ul

Orders: order@signalwayantibody.com

Support: tech@signalwayantibody.com

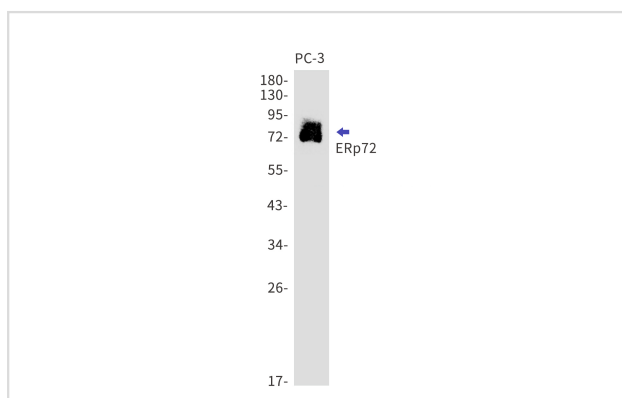
Description

Product Name	ERp72 Rabbit mAb
Host Species	Recombinant Rabbit
Clonality	Monoclonal antibody
Clone No.	S02-1J3
Isotype	Rabbit IgG
Purification	Affinity Purified
Applications	WB
Species Reactivity	Human,Mouse
Immunogen Description	A synthetic peptide of human ERp72
Conjugates	Unconjugated
Modification	Unmodification
Other Names	protein disulfide isomerase family A member 4;ERP70; ERP72; ERp-72
Accession No.	Swiss-Prot:P13667GenelD:9601
Uniprot	P13667
GenelD	9601
Calculated MW	Calculated MW: 73 kDa; Observed MW: 73 kDa
Concentration	0.3 mg/ml
Formulation	50mM Tris-Glycine(pH 7.4), 0.15M NaCl, 40% Glycerol, 0.01% Sodium azide and 0.05% BSA
Storage	Store at 4°C short term. Aliquot and store at -20°C long term. Avoid freeze/thaw cycles.

Application Details

WB: 1/1000;

Images



Western blot detection of ERp72 in PC-3 cell lysates using ERp72 Rabbit mAb(1:1000 diluted). Predicted band size:73kDa.Observed band size:73kDa.

Background

Swiss-Prot Acc.P13667.Protein disulfide-isomerase A4

Note: This product is for in vitro research use only