

FBP1 Rabbit mAb

Catalog No: #52279

Package Size: #52279-1 50ul #52279-2 100ul

Orders: order@signalwayantibody.com

Support: tech@signalwayantibody.com

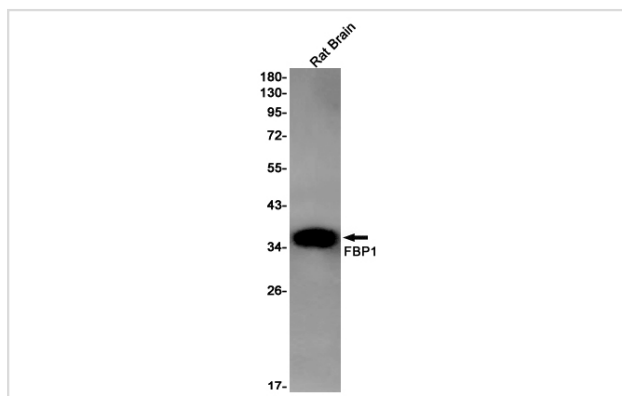
Description

Product Name	FBP1 Rabbit mAb
Host Species	Recombinant Rabbit
Clonality	Monoclonal antibody
Clone No.	S04-1D6
Isotype	Rabbit IgG
Purification	Affinity Purified
Applications	WB IHC
Species Reactivity	Human,Mouse,Rat
Immunogen Description	A synthetic peptide of human FBP1
Conjugates	Unconjugated
Modification	Unmodification
Other Names	FBP
Accession No.	Swiss-Prot:P09467GenelD:2203
Uniprot	P09467
GenelD	2203
Calculated MW	Calculated MW: 37 kDa; Observed MW: 37 kDa
Concentration	0.3 mg/ml
Formulation	50mM Tris-Glycine(pH 7.4), 0.15M NaCl, 40% Glycerol, 0.01% Sodium azide and 0.05% BSA
Storage	Store at 4°C short term. Aliquot and store at -20°C long term. Avoid freeze/thaw cycles.

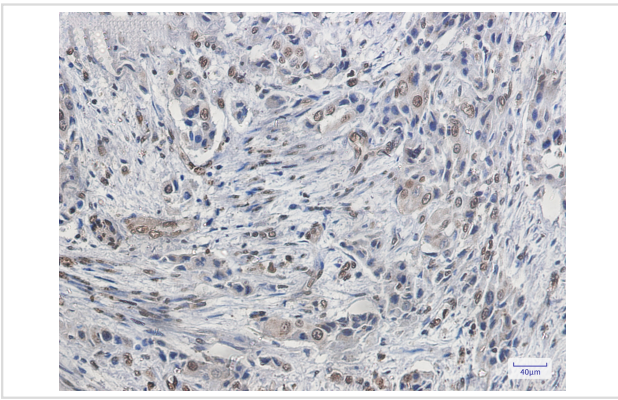
Application Details

WB: 1/1000-1/5000; IHC: 1/20-1/50

Images



Western blot detection of FBP1 in Rat Brain lysates using FBP1 Rabbit mAb(1:1000 diluted).Predicted band size:37kDa.Observed band size:37kDa.



Immunohistochemistry of FBP1 in paraffin-embedded Human lung cancer tissue using FBP1 Rabbit mAb at dilution 1/20

Background

Swiss-Prot Acc.P09467. Catalyzes the hydrolysis of fructose 1,6-bisphosphate to fructose 6-phosphate in the presence of divalent cations, acting as a rate-limiting enzyme in gluconeogenesis. Plays a role in regulating glucose sensing and insulin secretion of pancreatic beta-cells. Appears to modulate glycerol gluconeogenesis in liver. Important regulator of appetite and adiposity; increased expression of the protein in liver after nutrient excess increases circulating satiety hormones and reduces appetite-stimulating neuropeptides and thus seems to provide a feedback mechanism to limit weight gain.

Note: This product is for in vitro research use only