

Galectin 3 Rabbit mAb

Catalog No: #52299

Package Size: #52299-1 50ul #52299-2 100ul

Orders: order@signalwayantibody.com

Support: tech@signalwayantibody.com

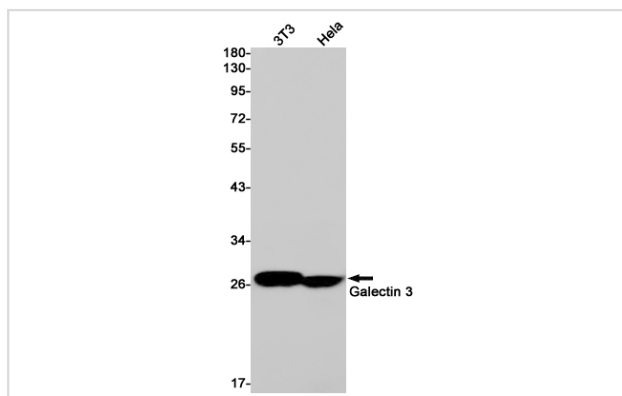
Description

Product Name	Galectin 3 Rabbit mAb
Host Species	Recombinant Rabbit
Clonality	Monoclonal antibody
Clone No.	S05-8J4
Isotype	Rabbit IgG
Purification	Affinity Purified
Applications	WB IHC
Species Reactivity	Human,Mouse,Rat
Immunogen Description	A synthetic peptide of human Galectin 3
Conjugates	Unconjugated
Modification	Unmodification
Other Names	L31; GAL3; MAC2; CBP35; GALBP; GALIG; LGALS2
Accession No.	Swiss-Prot:P17931GenelD:3958
Uniprot	P17931
GenelD	3958
Calculated MW	Calculated MW: 26 kDa; Observed MW: 28 kDa
Concentration	0.3 mg/ml
Formulation	50mM Tris-Glycine(pH 7.4), 0.15M NaCl, 40% Glycerol, 0.01% Sodium azide and 0.05% BSA
Storage	Store at 4°C short term. Aliquot and store at -20°C long term. Avoid freeze/thaw cycles.

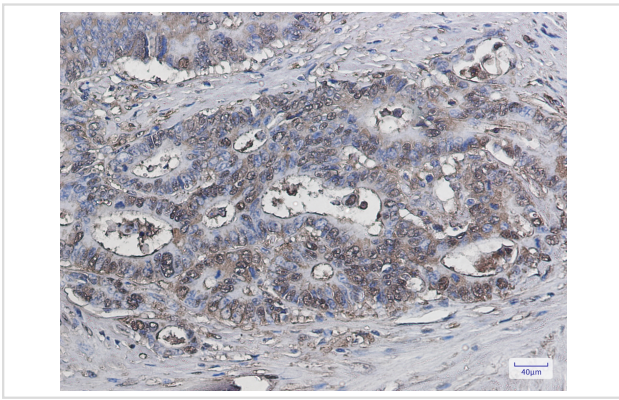
Application Details

WB: 1/1000; IHC: 1/200;

Images



Western blot detection of Galectin 3 in 3T3,HeLa cell lysates using Galectin 3 Rabbit mAb(1:1000 diluted).Predicted band size:26kDa.Observed band size:28kDa.



Immunohistochemistry of Galectin 3 in paraffin-embedded Human colon cancer tissue using Galectin 3 Rabbit mAb at dilution 1/50

Background

Swiss-Prot Acc.P17931. Galactose-specific lectin which binds IgE. May mediate with the alpha-3, beta-1 integrin the stimulation by CSPG4 of endothelial cells migration. Together with DMBT1, required for terminal differentiation of columnar epithelial cells during early embryogenesis. In the nucleus: acts as a pre-mRNA splicing factor. Involved in acute inflammatory responses including neutrophil activation and adhesion, chemoattraction of monocytes macrophages, opsonization of apoptotic neutrophils, and activation of mast cells. Together with TRIM16, coordinates the recognition of membrane damage with mobilization of the core autophagy regulators ATG16L1 and BECN1 in response to damaged endomembranes.

Note: This product is for in vitro research use only