

GC1q R Rabbit mAb

Catalog No: #52301

Package Size: #52301-1 50ul #52301-2 100ul

Orders: order@signalwayantibody.com

Support: tech@signalwayantibody.com

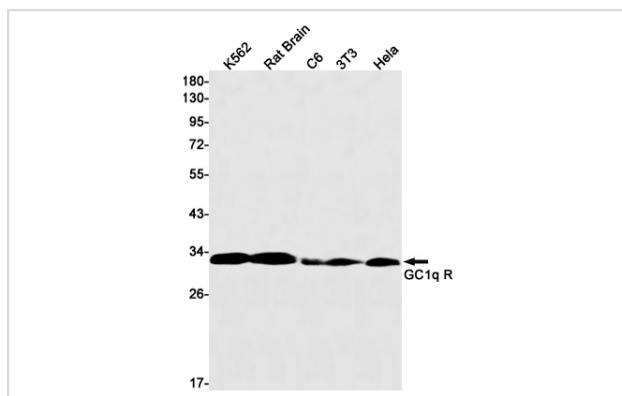
Description

Product Name	GC1q R Rabbit mAb
Host Species	Recombinant Rabbit
Clonality	Monoclonal antibody
Clone No.	S03-6A3
Isotype	Rabbit IgG
Purification	Affinity Purified
Applications	WB
Species Reactivity	Human,Mouse,Rat
Immunogen Description	A synthetic peptide of human GC1q R
Conjugates	Unconjugated
Modification	Unmodification
Other Names	p32; HABP1; gC1qR; GC1QBP; SF2p32; gC1Q-R; COXPD33
Accession No.	Swiss-Prot:Q07021GeneID:708
Uniprot	Q07021
GeneID	708
Calculated MW	Calculated MW: 31 kDa; Observed MW: 31 kDa
Concentration	0.3 mg/ml
Formulation	50mM Tris-Glycine(pH 7.4), 0.15M NaCl, 40% Glycerol, 0.01% Sodium azide and 0.05% BSA
Storage	Store at 4°C short term. Aliquot and store at -20°C long term. Avoid freeze/thaw cycles.

Application Details

WB: 1/1000

Images



Western blot detection of GC1q R in K562, Rat Brain, C6, 3T3, HeLa cell lysates using GC1q R Rabbit mAb (1:1000 diluted). Predicted band size: 31 kDa. Observed band size: 31 kDa.

Background

Swiss-Prot Acc.Q07021.Is believed to be a multifunctional and multicompartamental protein involved in inflammation and infection processes, ribosome biogenesis, protein synthesis in mitochondria, regulation of apoptosis, transcriptional regulation and pre-mRNA splicing. At the cell surface is thought to act as an endothelial receptor for plasma proteins of the complement and kallikrein-kinin cascades. Putative receptor for C1q; specifically binds to the globular

Note: This product is for in vitro research use only