

## GDF15 Rabbit mAb

Catalog No: #52304

Package Size: #52304-1 50ul #52304-2 100ul

Orders: order@signalwayantibody.com

Support: tech@signalwayantibody.com

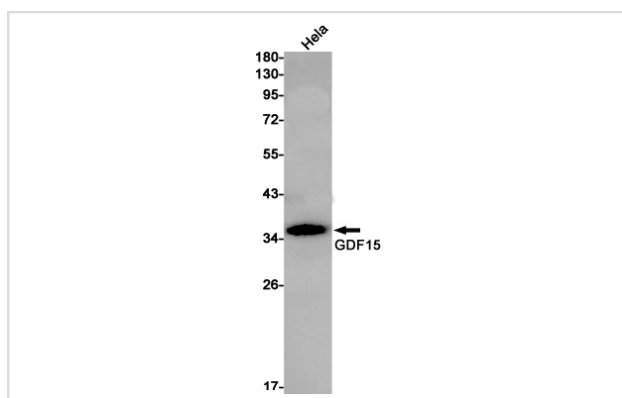
## Description

Product Name	GDF15 Rabbit mAb
Host Species	Recombinant Rabbit
Clonality	Monoclonal antibody
Clone No.	S04-811
Isotype	Rabbit IgG
Purification	Affinity Purified
Applications	WB
Species Reactivity	Human
Immunogen Description	A synthetic peptide of human GDF15
Conjugates	Unconjugated
Modification	Unmodification
Other Names	PDF; MIC1; PLAB; MIC-1; NAG-1; PTGFB; GDF-15
Accession No.	Swiss-Prot:Q99988GeneID:9518
Uniprot	Q99988
GeneID	9518
Calculated MW	Calculated MW: 34 kDa; Observed MW: 34 kDa
Concentration	0.3 mg/ml
Formulation	50mM Tris-Glycine(pH 7.4), 0.15M NaCl, 40% Glycerol, 0.01% Sodium azide and 0.05% BSA
Storage	Store at 4°C short term. Aliquot and store at -20°C long term. Avoid freeze/thaw cycles.

## Application Details

WB: 1/1000

## Images



Western blot detection of GDF15 in HeLa cell lysates using GDF15 Rabbit mAb(1:1000 diluted).Predicted band size:34kDa.Observed band size:34kDa.

## Background

---

Swiss-Prot Acc.Q99988.Regulates food intake, energy expenditure and body weight in response to metabolic and toxin-induced stresses (PubMed:28953886, PubMed:28846097, PubMed:28846098, PubMed:28846099, PubMed:23468844, PubMed:29046435). Binds to its receptor, GFRAL, and activates GFRAL-expressing neurons localized in the area postrema and nucleus tractus solitarius of the brainstem (PubMed:28953886, PubMed:28846097, PubMed:28846098, PubMed:28846099). It then triggers the activation of neurons localized within the parabrachial nucleus and central amygdala, which constitutes part of the 'emergency circuit' that shapes feeding responses to stressful conditions (PubMed:28953886). On hepatocytes, inhibits growth hormone signaling .

---

Note: This product is for in vitro research use only