

## HBEGF Rabbit mAb

Catalog No: #52326

Package Size: #52326-1 50ul #52326-2 100ul

Orders: order@signalwayantibody.com

Support: tech@signalwayantibody.com

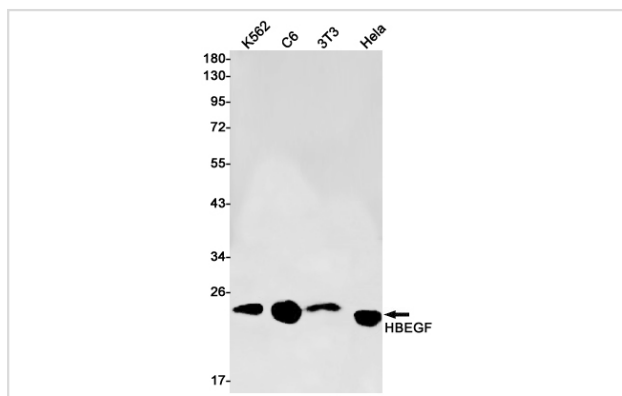
## Description

Product Name	HBEGF Rabbit mAb
Host Species	Recombinant Rabbit
Clonality	Monoclonal antibody
Clone No.	S08-9C2
Isotype	Rabbit IgG
Purification	Affinity Purified
Applications	WB
Species Reactivity	Human,Rat
Immunogen Description	A synthetic peptide of human HBEGF
Conjugates	Unconjugated
Modification	Unmodification
Other Names	DTR; DTS; DTSF; HB-EGF; HBEGF; HEGFL;
Accession No.	Swiss-Prot:Q99075GeneID:1839
Uniprot	Q99075
GeneID	1839
Calculated MW	Calculated MW: 23 kDa; Observed MW: 23 kDa
Concentration	0.3 mg/ml
Formulation	50mM Tris-Glycine(pH 7.4), 0.15M NaCl, 40% Glycerol, 0.01% Sodium azide and 0.05% BSA
Storage	Store at 4°C short term. Aliquot and store at -20°C long term. Avoid freeze/thaw cycles.

## Application Details

WB: 1/2000-1/10000

## Images



Western blot detection of HBEGF in K562,C6,3T3,Hela cell lysates using HBEGF Rabbit mAb(1:1000 diluted).Predicted band size:23kDa.Observed band size:23kDa.

## Background

---

Swiss-Prot Acc.Q99075.Growth factor that mediates its effects via EGFR, ERBB2 and ERBB4. Required for normal cardiac valve formation and normal heart function. Promotes smooth muscle cell proliferation. May be involved in macrophage-mediated cellular proliferation. It is mitogenic for fibroblasts, but not endothelial cells. It is able to bind EGF receptor/EGFR with higher affinity than EGF itself and is a far more potent mitogen for smooth muscle cells than EGF. Also acts as a diphtheria toxin receptor.SitesFeature keyPosition(s)Description

---

Note: This product is for in vitro research use only