

## HMGCL Rabbit mAb

Catalog No: #52339

Package Size: #52339-1 50ul #52339-2 100ul

Orders: order@signalwayantibody.com

Support: tech@signalwayantibody.com

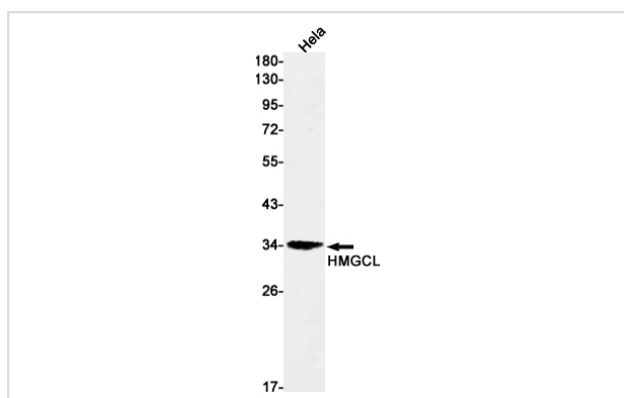
## Description

Product Name	HMGCL Rabbit mAb
Host Species	Recombinant Rabbit
Clonality	Monoclonal antibody
Clone No.	S08-7H5
Isotype	Rabbit IgG
Purification	Affinity Purified
Applications	WB
Species Reactivity	Human
Immunogen Description	A synthetic peptide of human HMGCL
Conjugates	Unconjugated
Modification	Unmodification
Other Names	3-hydroxymethyl-3-methylglutaryl-CoA lyase;HL
Accession No.	Swiss-Prot:P35914GenelD:3155
Uniprot	P35914
GenelD	3155
Calculated MW	Calculated MW: 34 kDa; Observed MW: 34 kDa
Concentration	0.3 mg/ml
Formulation	50mM Tris-Glycine(pH 7.4), 0.15M NaCl, 40% Glycerol, 0.01% Sodium azide and 0.05% BSA
Storage	Store at 4°C short term. Aliquot and store at -20°C long term. Avoid freeze/thaw cycles.

## Application Details

WB: 1/1000

## Images



Western blot detection of HMGCL in HeLa cell lysates using HMGCL Rabbit mAb(1:1000 diluted). Predicted band size:34kDa.Observed band size:34kDa.

## Background

---

Swiss-Prot Acc.P35914. Key enzyme in ketogenesis (ketone body formation). Terminal step in leucine catabolism. Ketone bodies (beta-hydroxybutyrate, acetoacetate and acetone) are essential as an alternative source of energy to glucose, as lipid precursors and as regulators of metabolism.

---

Note: This product is for in vitro research use only