

IFT88 Rabbit mAb

Catalog No: #52358

Package Size: #52358-1 50ul #52358-2 100ul

Orders: order@signalwayantibody.com

Support: tech@signalwayantibody.com

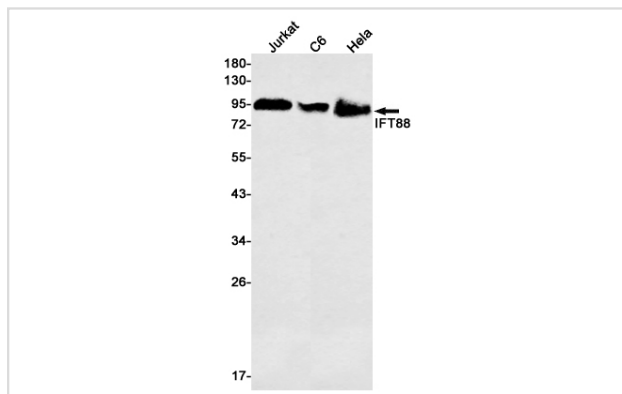
Description

Product Name	IFT88 Rabbit mAb
Host Species	Recombinant Rabbit
Clonality	Monoclonal antibody
Clone No.	S01-5D7
Isotype	Rabbit IgG
Purification	Affinity Purified
Applications	WB
Species Reactivity	Human,Mouse,Rat
Immunogen Description	A synthetic peptide of human IFT88
Conjugates	Unconjugated
Modification	Unmodification
Other Names	Recessive polycystic kidney disease protein Tg737 homolog;Tetratricopeptide repeat protein 10;TPR repeat protein 10
Accession No.	Swiss-Prot:Q13099GeneID:8100
Uniprot	Q13099
GeneID	8100
Calculated MW	Calculated MW: 94 kDa; Observed MW: 94 kDa
Concentration	0.3 mg/ml
Formulation	50mM Tris-Glycine(pH 7.4), 0.15M NaCl, 40% Glycerol, 0.01% Sodium azide and 0.05% BSA
Storage	Store at 4°C short term. Aliquot and store at -20°C long term. Avoid freeze/thaw cycles.

Application Details

WB: 1/2000-1/10000;

Images



Western blot detection of IFT88 in Jurkat,C6,Hela cell lysates using IFT88 Rabbit mAb(1:1000 diluted).Predicted band size:94kDa.Observed band size:94kDa.

Background

Swiss-Prot Acc.Q13099. Involved in primary cilium biogenesis. Also involved in autophagy since it is required for trafficking of ATG16L and the expansion of the autophagic compartment.

Note: This product is for in vitro research use only