

IGFBP1 Rabbit mAb

Catalog No: #52359

Package Size: #52359-1 50ul #52359-2 100ul

Orders: order@signalwayantibody.com

Support: tech@signalwayantibody.com

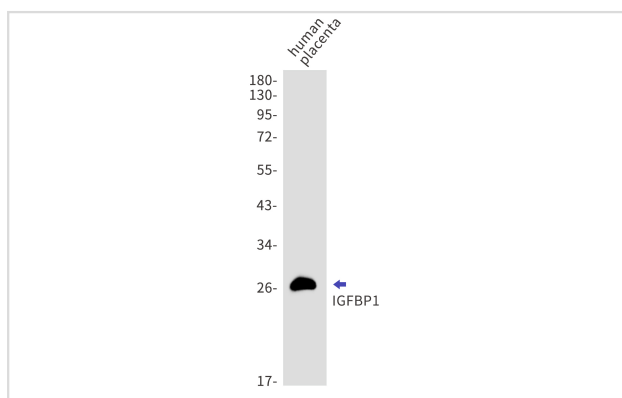
Description

Product Name	IGFBP1 Rabbit mAb
Host Species	Recombinant Rabbit
Clonality	Monoclonal antibody
Clone No.	S06-6J8
Isotype	Rabbit IgG
Purification	Affinity Purified
Applications	WB
Species Reactivity	Human
Immunogen Description	A synthetic peptide of human IGFBP1
Conjugates	Unconjugated
Modification	Unmodification
Other Names	AFBP; IBP1; PP12; IGF-BP25; hIGFBP-1
Accession No.	Swiss-Prot:P08833GenelD:3484
Uniprot	P08833
GenelD	3484
Calculated MW	Calculated MW: 28 kDa; Observed MW: 28 kDa
Concentration	0.3 mg/ml
Formulation	50mM Tris-Glycine(pH 7.4), 0.15M NaCl, 40% Glycerol, 0.01% Sodium azide and 0.05% BSA
Storage	Store at 4°C short term. Aliquot and store at -20°C long term. Avoid freeze/thaw cycles.

Application Details

WB: 1/1000

Images



Western blot detection of IGFBP1 in human placenta lysates using IGFBP1 antibody. Predicted band size: 28kDa. Observed band size: 28kDa.

Background

Swiss-Prot Acc.P08833.IGF-binding proteins prolong the half-life of the IGFs and have been shown to either inhibit or stimulate the growth promoting effects of the IGFs on cell culture. They alter the interaction of IGFs with their cell surface receptors. Promotes cell migration.

Note: This product is for in vitro research use only