

IGFBP6 Rabbit mAb

Catalog No: #52360

Package Size: #52360-1 50ul #52360-2 100ul

Orders: order@signalwayantibody.com

Support: tech@signalwayantibody.com

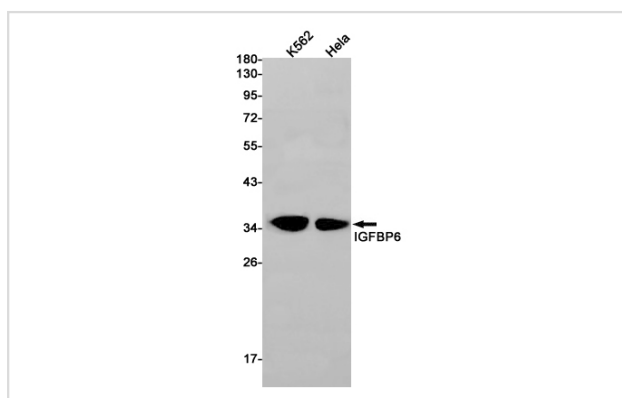
Description

Product Name	IGFBP6 Rabbit mAb
Host Species	Recombinant Rabbit
Clonality	Monoclonal antibody
Clone No.	S02-6G2
Isotype	Rabbit IgG
Purification	Affinity Purified
Applications	WB
Species Reactivity	Human
Immunogen Description	Recombinant protein of human IGFBP6
Conjugates	Unconjugated
Modification	Unmodification
Other Names	IBP6
Accession No.	Swiss-Prot:P24592GenelD:3489
Uniprot	P24592
GenelD	3489
Calculated MW	Calculated MW: 25 kDa; Observed MW: 35 kDa
Concentration	0.3 mg/ml
Formulation	50mM Tris-Glycine(pH 7.4), 0.15M NaCl, 40% Glycerol, 0.01% Sodium azide and 0.05% BSA
Storage	Store at 4°C short term. Aliquot and store at -20°C long term. Avoid freeze/thaw cycles.

Application Details

WB: 1/1000;

Images



Western blot detection of IGFBP6 in K562, HeLa cell lysates using IGFBP6 Rabbit mAb(1:1000 diluted). Predicted band size: 25kDa. Observed band size: 35kDa.

Background

Swiss-Prot Acc.P24592.IGF-binding proteins prolong the half-life of the IGFs and have been shown to either inhibit or stimulate the growth promoting effects of the IGFs on cell culture. They alter the interaction of IGFs with their cell surface receptors.

Note: This product is for in vitro research use only