

Inhibin beta A Rabbit mAb

Catalog No: #52366

Package Size: #52366-1 50ul #52366-2 100ul

Orders: order@signalwayantibody.com

Support: tech@signalwayantibody.com

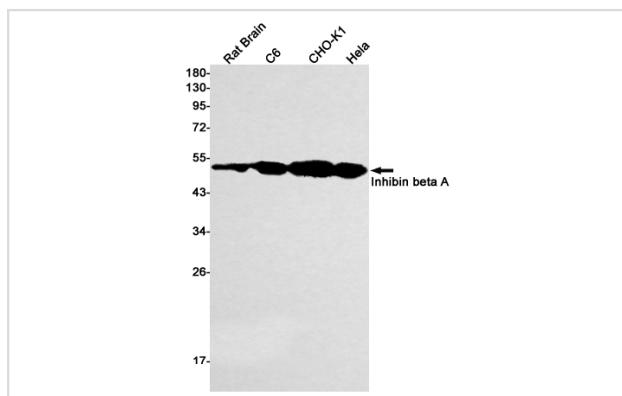
Description

Product Name	Inhibin beta A Rabbit mAb
Host Species	Recombinant Rabbit
Clonality	Monoclonal antibody
Clone No.	S03-1F0
Isotype	Rabbit IgG
Purification	Affinity Purified
Applications	WB
Species Reactivity	Human,Mouse,Rat
Immunogen Description	A synthetic peptide of human Inhibin beta A
Conjugates	Unconjugated
Modification	Unmodification
Other Names	EDF; FRP
Accession No.	Swiss-Prot:P08476GenelD:3624
Uniprot	P08476
GenelD	3624
Calculated MW	Calculated MW: 47 kDa; Observed MW: 44 kDa
Concentration	0.3 mg/ml
Formulation	50mM Tris-Glycine(pH 7.4), 0.15M NaCl, 40% Glycerol, 0.01% Sodium azide and 0.05% BSA
Storage	Store at 4°C short term. Aliquot and store at -20°C long term. Avoid freeze/thaw cycles.

Application Details

WB: 1/1000-1/5000

Images



Western blot detection of Inhibin beta A in Rat Brain, C6, CHO-K1, HeLa cell lysates using Inhibin beta A Rabbit mAb (1:1000 diluted). Predicted band size: 47 kDa. Observed band size: 44 kDa.

Background

Swiss-Prot Acc.P08476.Inhibins and activins inhibit and activate, respectively, the secretion of follitropin by the pituitary gland. Inhibins/activins are involved in regulating a number of diverse functions such as hypothalamic and pituitary hormone secretion, gonadal hormone secretion, germ cell development and maturation, erythroid differentiation, insulin secretion, nerve cell survival, embryonic axial development or bone growth, depending on their subunit composition. Inhibins appear to oppose the functions of activins.

Note: This product is for in vitro research use only