

Integrin alpha 2 Rabbit mAb

Catalog No: #52370

Package Size: #52370-1 50ul #52370-2 100ul

Orders: order@signalwayantibody.com

Support: tech@signalwayantibody.com

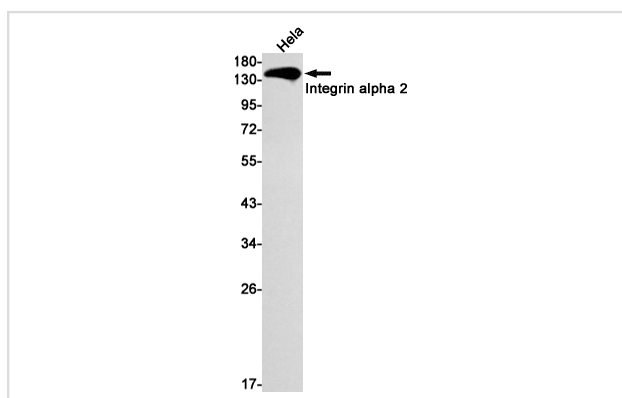
Description

Product Name	Integrin alpha 2 Rabbit mAb
Host Species	Recombinant Rabbit
Clonality	Monoclonal antibody
Clone No.	S06-7A5
Isotype	Rabbit IgG
Purification	Affinity Purified
Applications	WB
Species Reactivity	Human,Mouse
Immunogen Description	A synthetic peptide of human Integrin alpha 2
Conjugates	Unconjugated
Modification	Unmodification
Other Names	BR; GPIa; CD49B; HPA-5; VLA-2; VLAA2
Accession No.	Swiss-Prot:P17301GenelD:3673
Uniprot	P17301
GenelD	3673
Calculated MW	Calculated MW: 129 kDa; Observed MW: 150 kDa
Concentration	0.3 mg/ml
Formulation	50mM Tris-Glycine(pH 7.4), 0.15M NaCl, 40% Glycerol, 0.01% Sodium azide and 0.05% BSA
Storage	Store at 4°C short term. Aliquot and store at -20°C long term. Avoid freeze/thaw cycles.

Application Details

WB: 1/2000-1/10000;

Images



Western blot detection of Integrin alpha 2 in HeLa cell lysates using Integrin alpha 2 Rabbit mAb(1:1000 diluted).Predicted band size:129kDa.Observed band size:150kDa.

Background

Swiss-Prot Acc.P17301.Integrin alpha-2/beta-1 is a receptor for laminin, collagen, collagen C-propeptides, fibronectin and E-cadherin. It recognizes the proline-hydroxylated sequence G-F-P-G-E-R in collagen. It is responsible for adhesion of platelets and other cells to collagens, modulation of collagen and collagenase gene expression, force generation and organization of newly synthesized extracellular matrix.(Microbial infection) Integrin ITGA2:ITGB1 acts as a receptor for Human rotavirus A.

Note: This product is for in vitro research use only