

KCTD21 Rabbit mAb

Catalog No: #52380

Package Size: #52380-1 50ul #52380-2 100ul

Orders: order@signalwayantibody.com

Support: tech@signalwayantibody.com

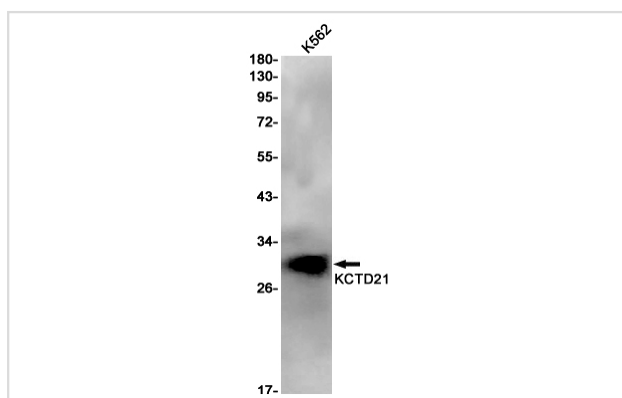
Description

Product Name	KCTD21 Rabbit mAb
Host Species	Recombinant Rabbit
Clonality	Monoclonal antibody
Clone No.	S02-4B5
Isotype	Rabbit IgG
Purification	Affinity Purified
Applications	WB
Species Reactivity	Human,Mouse,Rat
Immunogen Description	Recombinant protein of human KCTD21
Conjugates	Unconjugated
Modification	Unmodification
Other Names	KCASH2
Accession No.	Swiss-Prot:Q4G0X4GeneID:283219
Uniprot	Q4G0X4
GeneID	283219
Calculated MW	Calculated MW: 30 kDa; Observed MW: 30 kDa
Concentration	0.3 mg/ml
Formulation	50mM Tris-Glycine(pH 7.4), 0.15M NaCl, 40% Glycerol, 0.01% Sodium azide and 0.05% BSA
Storage	Store at 4°C short term. Aliquot and store at -20°C long term. Avoid freeze/thaw cycles.

Application Details

WB: 1/1000;

Images



Western blot detection of KCTD21 in K562 cell lysates using KCTD21 Rabbit mAb(1:1000 diluted). Predicted band size:30kDa. Observed band size:30kDa.

Background

Swiss-Prot Acc.Q4G0X4. Probable substrate-specific adapter of a BCR (BTB-CUL3-RBX1) E3 ubiquitin-protein ligase complex mediating the ubiquitination and subsequent proteasomal degradation of target proteins. Promotes the ubiquitination of HDAC1. Can function as antagonist of the Hedgehog pathway by affecting the nuclear transfer of transcription factor GLI1; the function probably occurs via HDAC1 down-regulation, keeping GLI1 acetylated and inactive. Inhibits cell growth and tumorigenicity of medulloblastoma (MDB) (PubMed:21472142).

Note: This product is for in vitro research use only