

KCTD3 Rabbit mAb

Catalog No: #52381

Package Size: #52381-1 50ul #52381-2 100ul

Orders: order@signalwayantibody.com

Support: tech@signalwayantibody.com

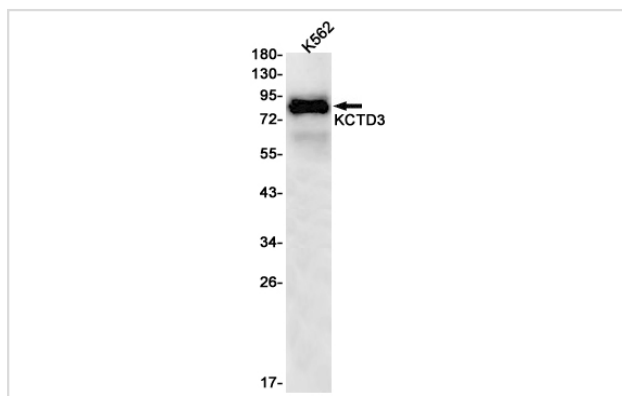
Description

Product Name	KCTD3 Rabbit mAb
Host Species	Recombinant Rabbit
Clonality	Monoclonal antibody
Clone No.	S09-8H3
Isotype	Rabbit IgG
Purification	Affinity Purified
Applications	WB
Species Reactivity	Human
Immunogen Description	Recombinant protein of human KCTD3
Conjugates	Unconjugated
Modification	Unmodification
Other Names	Renal carcinoma antigen NY-REN-45
Accession No.	Swiss-Prot:Q9Y597GeneID:51133
Uniprot	Q9Y597
GeneID	51133
Calculated MW	Calculated MW: 89 kDa; Observed MW: 89 kDa
Concentration	0.3 mg/ml
Formulation	50mM Tris-Glycine(pH 7.4), 0.15M NaCl, 40% Glycerol, 0.01% Sodium azide and 0.05% BSA
Storage	Store at 4°C short term. Aliquot and store at -20°C long term. Avoid freeze/thaw cycles.

Application Details

WB: 1/1000

Images



Western blot detection of KCTD3 in K562 cell lysates using KCTD3 Rabbit mAb(1:1000 diluted). Predicted band size:89kDa.Observed band size:89kDa.

Background

Swiss-Prot Acc.Q9Y597.BTB/POZ domain-containing protein KCTD3

Note: This product is for in vitro research use only