

KCTD9 Rabbit mAb

Catalog No: #52382

Package Size: #52382-1 50ul #52382-2 100ul

Orders: order@signalwayantibody.com

Support: tech@signalwayantibody.com

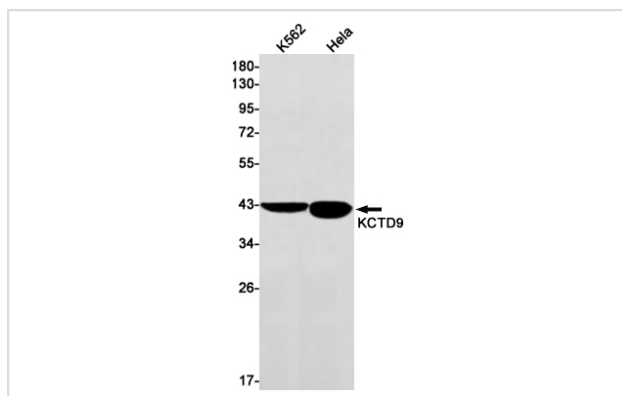
Description

Product Name	KCTD9 Rabbit mAb
Host Species	Recombinant Rabbit
Clonality	Monoclonal antibody
Clone No.	S08-5H2
Isotype	Rabbit IgG
Purification	Affinity Purified
Applications	WB IF
Species Reactivity	Human
Immunogen Description	A synthetic peptide of human KCTD9
Conjugates	Unconjugated
Modification	Unmodification
Other Names	BTB/POZ domain-containing protein KCTD9
Accession No.	Swiss-Prot:Q7L273GenelD:54793
Uniprot	Q7L273
GenelD	54793
Calculated MW	Calculated MW: 43 kDa; Observed MW: 43 kDa
Concentration	0.3 mg/ml
Formulation	50mM Tris-Glycine(pH 7.4), 0.15M NaCl, 40% Glycerol, 0.01% Sodium azide and 0.05% BSA
Storage	Store at 4°C short term. Aliquot and store at -20°C long term. Avoid freeze/thaw cycles.

Application Details

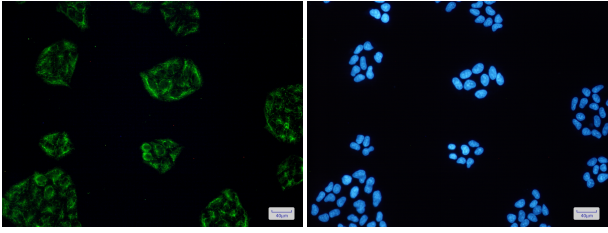
WB: 1/2000-1/10000; ICC/IF: 1/20

Images



Western blot detection of KCTD9 in K562, HeLa cell lysates using KCTD9 Rabbit mAb (1:1000 diluted). Predicted band size: 43 kDa. Observed band size: 43 kDa.

Immunofluorescence of KCTD9(green) in HeLa cells using KCTD9 Rabbit mAb at dilution 1/50, and DAPI(blue)



Background

Swiss-Prot Acc.Q7L273.Substrate-specific adapter of a BCR (BTB-CUL3-RBX1) E3 ubiquitin-protein ligase complex, which mediates the ubiquitination of target proteins, leading to their degradation by the proteasome.

Note: This product is for in vitro research use only